



LUXURY CHALET RENTALS

ALPINE COLLECTION

DENT BLANCHE

— ◆ —
V E R B I E R



♦ Verbier, Switzerland

♦ 950 m²

♦ Sleeps 12

♦ 7 bedrooms

♦ 7 bathrooms

♦ Gym

♦ Hammam/steam room

♦ Indoor pool

♦ Outdoor hot tub

♦ Sauna

♦ South facing balconies

♦ Spa





THE RESIDENCE

Dent Blanche

Tucked discreetly among the trees yet positioned at the very heart of Verbier, Chalet Dent Blanche is a remarkable private residence of 950 square metres, accommodating up to twelve guests across four beautifully considered floors connected by both staircase and lift. Conceived as a love letter to the local architectural vernacular, the chalet is dressed throughout in authentic traditional timbers and intricate alpine detailing, while handmade furniture, carefully curated antiques and contemporary works of art unite in an expression of effortless alpine chic. The open plan living and dining floor draws guests naturally from the elegant kitchen to the fireside sitting areas and a balcony that frames sweeping panoramic views across the surrounding mountains, while Place Centrale lies a mere three minutes on foot and the Medran lift station just seven.

The sleeping accommodation is arranged with equal generosity and care. The uppermost floor is devoted to a principal double bedroom with a private balcony and en suite bathroom, accompanied by a twin room furnished with two queen size beds and its own en suite. A further sleeping floor presents two additional double bedrooms each with en suite facilities, a twin bedroom with en suite shower room and a charming bunk room for two young guests, also with an en suite shower room. A dedicated ski and boot room with boot heaters, leading directly to the indoor garage for two cars, ensures that the practicalities of mountain life are handled with the same precision as every other aspect of the chalet.



The ground floor is perhaps the most spectacular of all, revealing an entirely private spa and leisure sanctuary that rivals the finest retreats in the Alps. A large heated indoor pool, hammam, sauna, massage room and outdoor hot tub are complemented by a professional standard gym with inspiring views over the Val des Bagnes, while a dedicated cinema room and private bar area complete an entertainment offering of the highest order. Crestron audio visual systems and comprehensive WiFi broadband extend seamlessly throughout the property, and refined outdoor relaxation areas invite guests to linger over the immense mountain panorama that defines life at Dent Blanche.





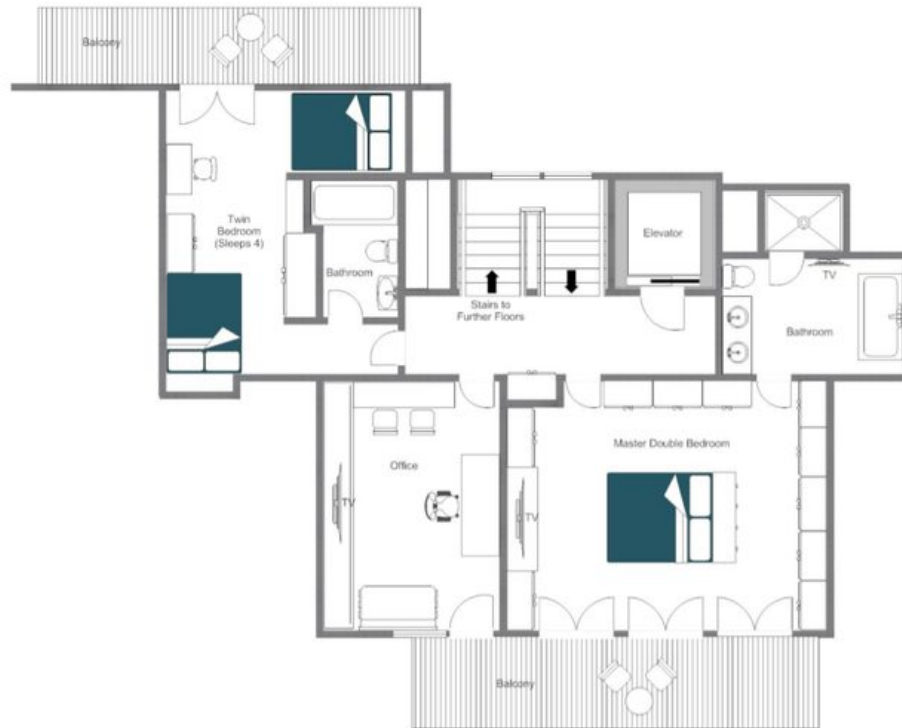




FLOORPLANS

TOP FLOOR

CHALET DENT BLANCHE - TOP FLOOR, FOR ILLUSTRATION PURPOSES ONLY



- ♦ Master double bedroom (sleeps 2, en-suite bathroom, private balcony)
- ♦ Twin bedroom (sleeps 2, queen-size beds, en-suite bathroom) 13

FLOORPLANS

LIVING FLOOR

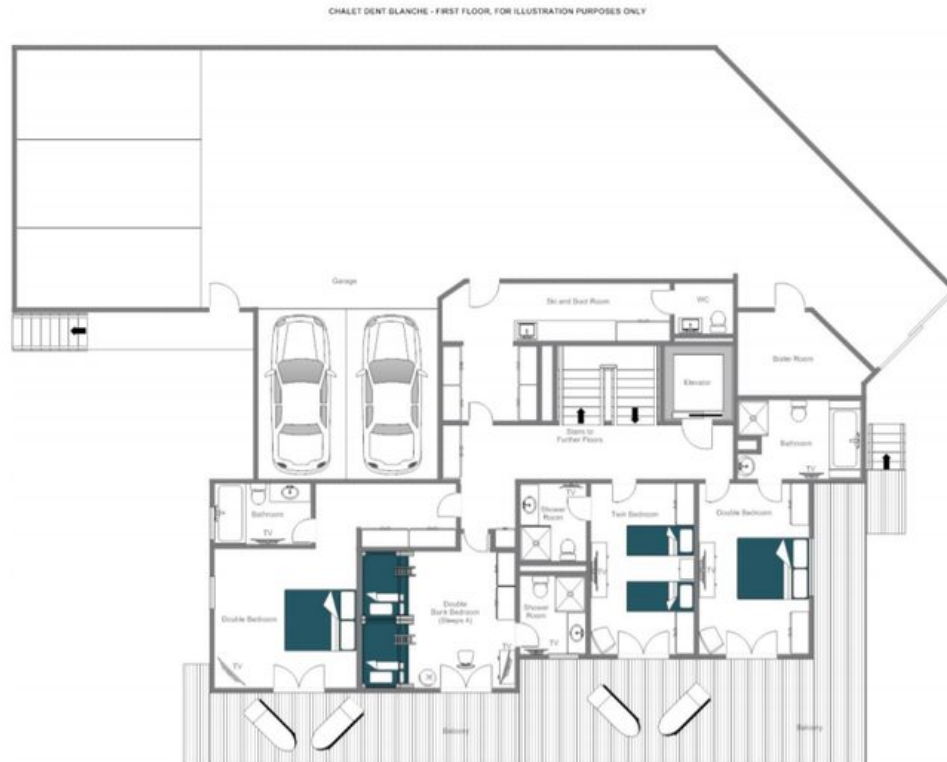
CHALET DENT BLANCHE - SECOND FLOOR, FOR ILLUSTRATION PURPOSES ONLY



- ♦ Open plan living and dining area
- ♦ Separate kitchen
- ♦ TV area
- ♦ Office
- ♦ Hallway
- ♦ Guest restroom
- ♦ Balcony

FLOORPLANS

SLEEPING FLOOR



- ♦ Double bedroom (sleeps 2, en-suite bathroom)
- ♦ Double bedroom (sleeps 2, en-suite bathroom)
- ♦ Twin bedroom (sleeps 2, en-suite shower room)
- ♦ Quad bunk room (sleeps 2, en-suite shower room)
- ♦ Guest WC
- ♦ Ski and boot room
- ♦ Additional restroom
- ♦ Garage area
- ♦ Balcony 15

FLOORPLANS

GROUND FLOOR



- ♦ Spa with pool, sauna, hammam, massage room, outdoor hot tub
- ♦ Shower area
- ♦ Gym
- ♦ Cinema room
- ♦ Additional staff bedroom (en-suite shower room)
- ♦ Separate WC

LOCATION

PROXIMITY

- ♦ Place Central — 3-minute walk
- ♦ Medran Lift Station — 3-minute drive or 7-minute walk





DENT BLANCHE



VERBIER