



LUXURY CHALET RENTALS

ALPINE COLLECTION

CHALET LA LOZE

MÉRIBEL



♦ Méribel, France

♦ 375 m²

♦ Sleeps 12 + 3

♦ 7 bedrooms

♦ 5 bathrooms

♦ Hammam/steam room

♦ Massage treatment room

♦ Outdoor hot tub

♦ Bar

♦ Dedicated cinema room

♦ Games room

♦ Pool/snooker table





THE RESIDENCE

Chalet La Loze

Tucked into the exclusive enclave of Méribel Village, Chalet La Loze is a magnificent seven-bedroom alpine retreat spanning four floors and 375 square metres, accommodating up to fifteen guests in surroundings of genuine refinement. The chalet's aesthetic is a masterful dialogue between the contemporary and the authentically rustic, where hand-selected European alpine antiques converse with abstract and alpine-themed artwork, custom oak cladding softens beside aged timbers, and one-of-a-kind natural fabrics lend each space an irreplaceable sense of character. The village itself is renowned for its old-world charm and its unrivalled access to the vast Trois Vallées domain, with the Golf ski lift just fifty metres from the door, whisking guests above snow-laden forests and, in mid-winter conditions, permitting a return by ski directly to the chalet.

The ground floor sets an assured tone, welcoming guests through a generous entrance hall with ample ski storage and boot warmers before revealing a bespoke cinema room with electric reclining seats, a hammam, a spa shower, a dedicated massage treatment room, and an eight-person outdoor hot tub reached via a heated pathway. An outdoor swim spa completes the wellness offering. The two principal sleeping floors above house seven individually conceived bedrooms, among them a grand master suite with a spacious dressing room, a Japanese WC and a marble-appointed en-suite featuring a separate double shower, alongside further double and twin configurations, each finished with rich fabrics, marble vanity units and considered atmospheric lighting. Several rooms open onto private balconies framing sweeping mountain vistas.



The chalet's crowning glory is its top-floor open-plan living and dining area, where a soaring apexed ceiling and double-height windows flood the space with winter light by day, while a central fireplace and carefully composed evening lighting conspire to create an atmosphere of warmth and quiet grandeur by night. A dedicated bar and a cosy television snug, elegantly separated by bronzed-framed internal windows, sit adjacent to the principal living area, and a dining table seats twelve for glamorous evenings at altitude. A large, fully equipped kitchen, designed to delight the most discerning cook, may be closed off from the dining room when a private chef is in residence. Beyond the double doors, a sweeping balcony offers an uninterrupted panorama across the valley, the perfect setting to reflect upon another extraordinary day in the mountains.



















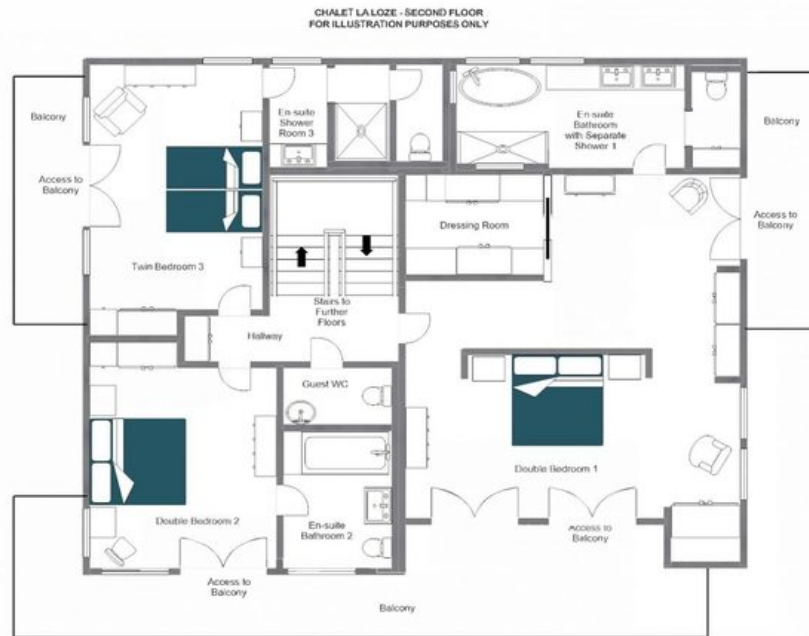
FLOORPLANS

TOP FLOOR



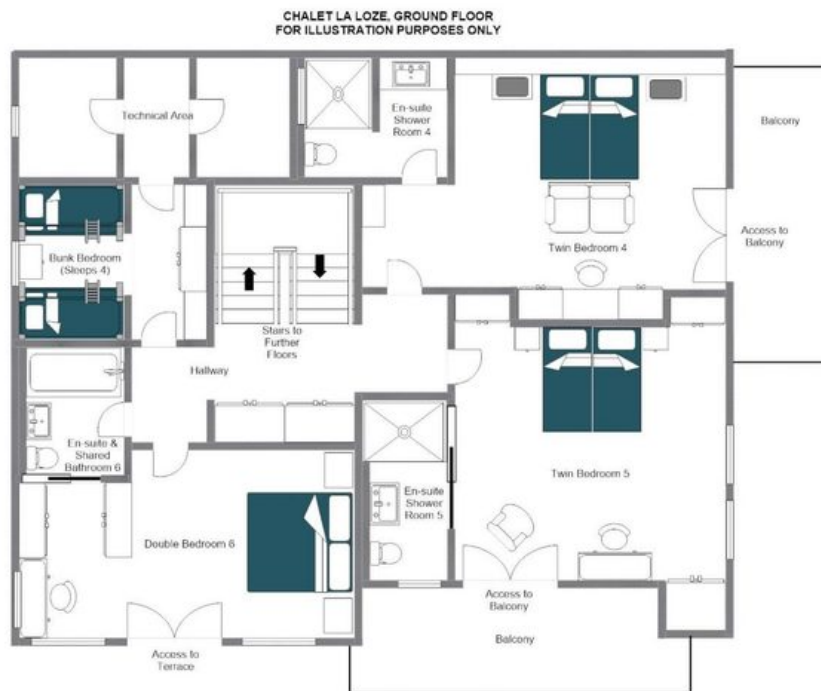
FLOORPLANS

SECOND FLOOR



FLOORPLANS

FIRST FLOOR



FLOORPLANS

GROUND FLOOR





CHALET LA LOZE



MÉRIBEL