



LUXURY CHALET RENTALS

ALPINE COLLECTION

CHALECH S

LECH



♦ Lech, Austria

♦ 400 m<sup>2</sup>

♦ Sleeps 12

♦ 6 bedrooms

♦ 6 bathrooms

♦ Hammam/steam room

♦ Sauna

♦ Shared access to gym

♦ Shared access to pool

♦ Spa

♦ Tv room

♦ Integrated sound system





## THE RESIDENCE

# Chalech S

Chalech S is a superbly positioned mountain residence in the heart of Lech, occupying four gracious floors of one of the resort's most coveted new developments and sleeping twelve guests across six individually conceived bedrooms. Mere moments from the Schlosskopf piste and the village centre, the property marries traditional Alpine materials with a confidently contemporary sensibility, every surface, fabric and lighting scheme chosen with exacting care. An elevator serves all floors with quiet efficiency, ensuring effortless movement from the private ski and boot storage on the lower ground level to the spectacular open-plan entertaining spaces above.

The ground floor is given over to a serene private spa, dressed in cool neutral tones and housing a sauna, a hammam and a dedicated relaxation area, the ideal retreat after a long day on the mountain. Two generously proportioned twin and double bedrooms with en-suite facilities sit alongside. Ascending to the first floor, guests discover the principal suite, complete with a walk-in wardrobe, a plush velvet seating area, a private balcony, and a beautifully appointed bathroom featuring a freestanding bath and separate rain shower. A further twin and double bedroom with en-suite bathroom and a cosy bunk room for two complete this level.



The uppermost floor is reserved for an expansive open-plan living, dining and kitchen space that ranks among the finest in Lech. A striking central fireplace anchors the room, while double-height ceilings and generous glazing amplify the sense of volume, and large sliding glass doors open onto a balcony commanding sweeping views across the village rooftops to the snow-laden peaks beyond. Sophisticated navy-accented furnishings complement a dining table that seats all twelve guests with ease, while the kitchen, distinguished by its patterned tile floor, matt black cabinetry and modern fixtures, is a genuinely pleasurable space in which to cook. A separate snug television room provides a discreet retreat for younger guests. Beyond the chalet's own private spa, residents also enjoy shared access to a luxurious swimming pool, tepidarium, gym and additional spa facilities within the wider Chalech development.









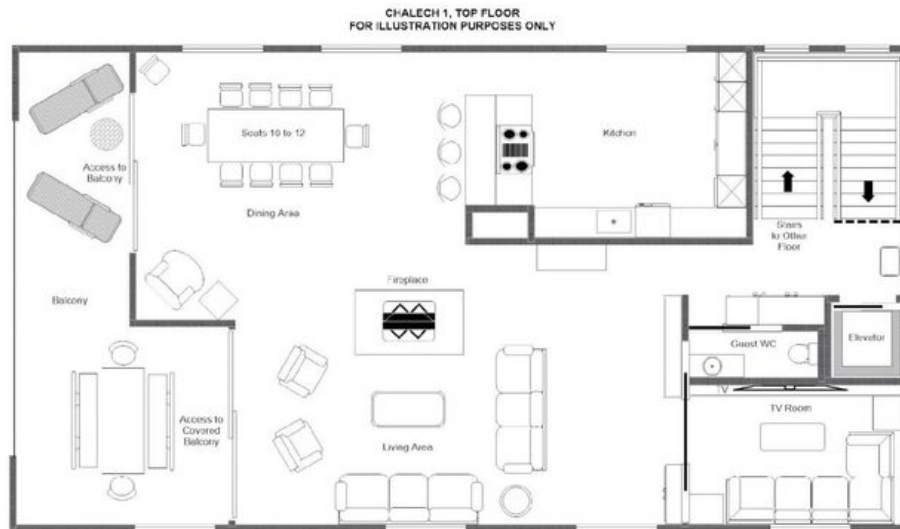






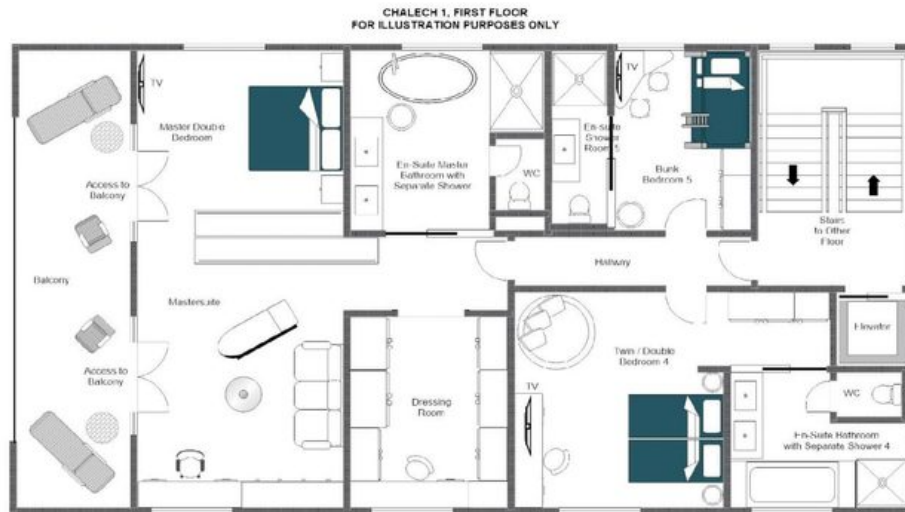
# FLOORPLANS

## TOP FLOOR



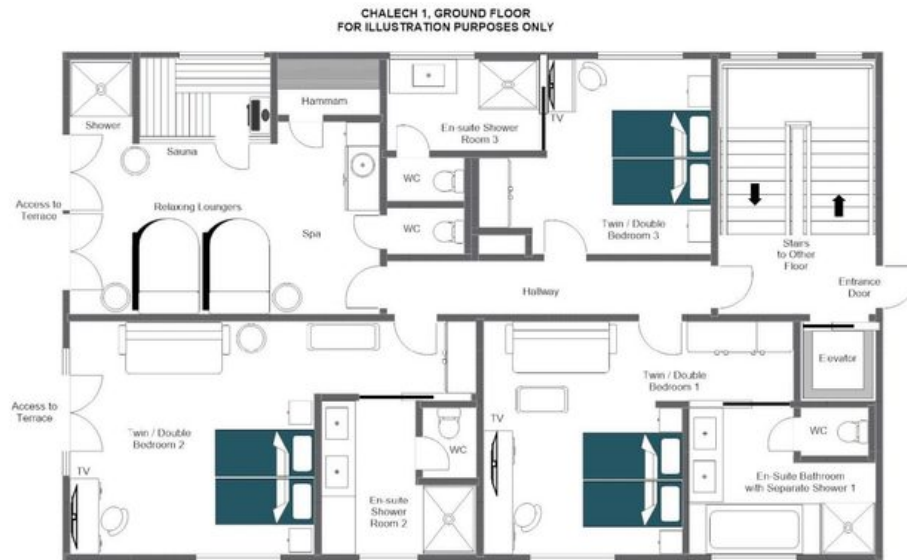
# FLOORPLANS

## FIRST FLOOR



# FLOORPLANS

## GROUND FLOOR





CHALECH S

LECH