



LUXURY CHALET RENTALS

# ALPINE COLLECTION

CHALET MARMOTTIÈRE

— ◆ —  
V E R B I E R



♦ Verbier, Switzerland

♦ 1500 m²

♦ Sleeps 18

♦ 9 bedrooms

♦ 9 bathrooms

♦ Gym

♦ Hammam/steam room

♦ Indoor pool

♦ Massage treatment room

♦ Outdoor hot tub

♦ Sauna

♦ South facing balconies



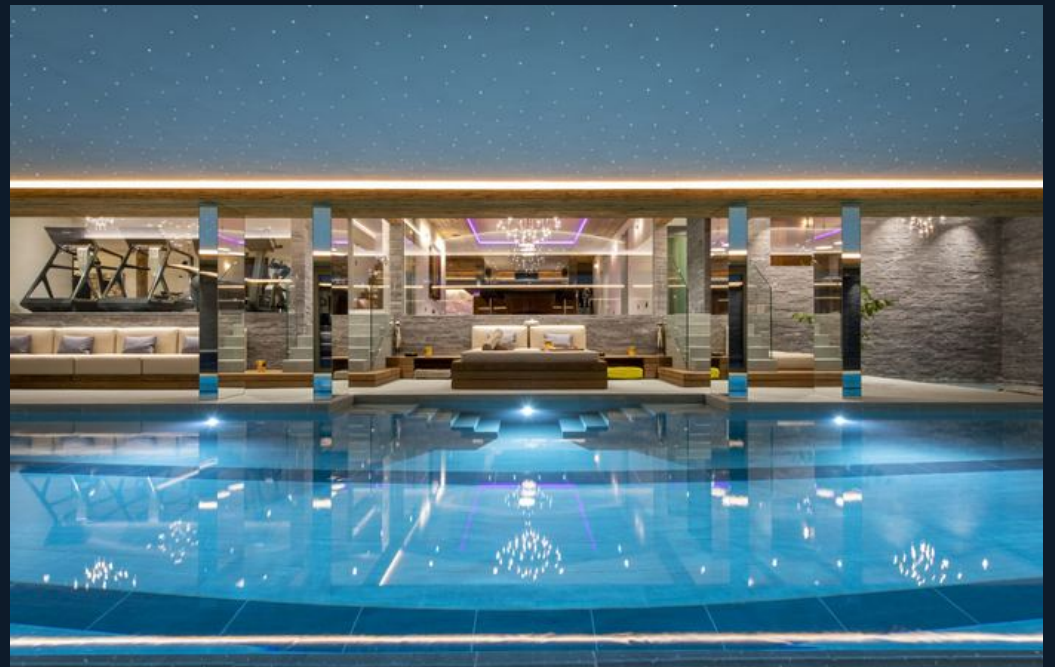


## THE RESIDENCE

## Chalet Marmottière

Crowning the exclusive enclave of Les Essert in Verbier, Chalet Marmottière is the recipient of the World's Best New Chalet 2020, a distinction that speaks eloquently to its extraordinary ambition and flawless execution. Comprising two beautifully appointed chalets linked both internally through the garage and by a private exterior walkway, the residence unfolds across 1,500 square metres of meticulously crafted living space, accommodating up to eighteen guests across nine sumptuous en-suite bedrooms. Floor-to-ceiling windows draw the breathtaking Alpine panorama deep into every principal room, while a harmonious palette of natural materials and bespoke contemporary furnishings lends the interiors a dramatic yet deeply refined sophistication. The Le Rouge piste lies fewer than one hundred metres from the door, with Savoleyres reachable in a two-minute drive and Médran in four.

The main chalet rises across four floors, each devoted to a distinct and considered purpose. The uppermost level is reserved for two grand master suites, each with its own individual character, a generous dressing room, a private balcony commanding snow-draped mountain views, and a superb en-suite, one with a bathroom and separate shower, the other with an elegant shower room. The first floor unfolds into a striking split-level open-plan living and dining area beneath a double-height ceiling, its vast sliding doors opening onto a wrap-around balcony flooded with daylight. The dining arrangement seats up to twelve at a single table, expanding to eighteen with the addition of a second, making it a sublime setting for grand entertaining. Four further en-suite bedrooms, an office and a service kitchen complete this level. The entire ground floor is consecrated to leisure and wellbeing, centred upon a magnificent seventeen-metre indoor swimming pool framed by floor-to-ceiling glazing, a sunken outdoor hot tub, a fully equipped gym, sauna, hammam, spa, bar and billiards area, a gaming room, a poker room with panoramic wine cellar, and a private bowling alley.



The second chalet, finished to the same exacting standards and arranged over three floors, offers three chic en-suite bedrooms, an open-plan kitchen, living and dining area, a 3D cinema with Dolby Atmos, a conference room, a dedicated massage room and a ski room, ensuring that every conceivable requirement of a discerning party is met with quiet, unhurried ease. Throughout both properties, a team of highly trained professionals, selected for excellence, attentiveness and absolute discretion, is on hand to ensure that each stay surpasses expectation in every regard.







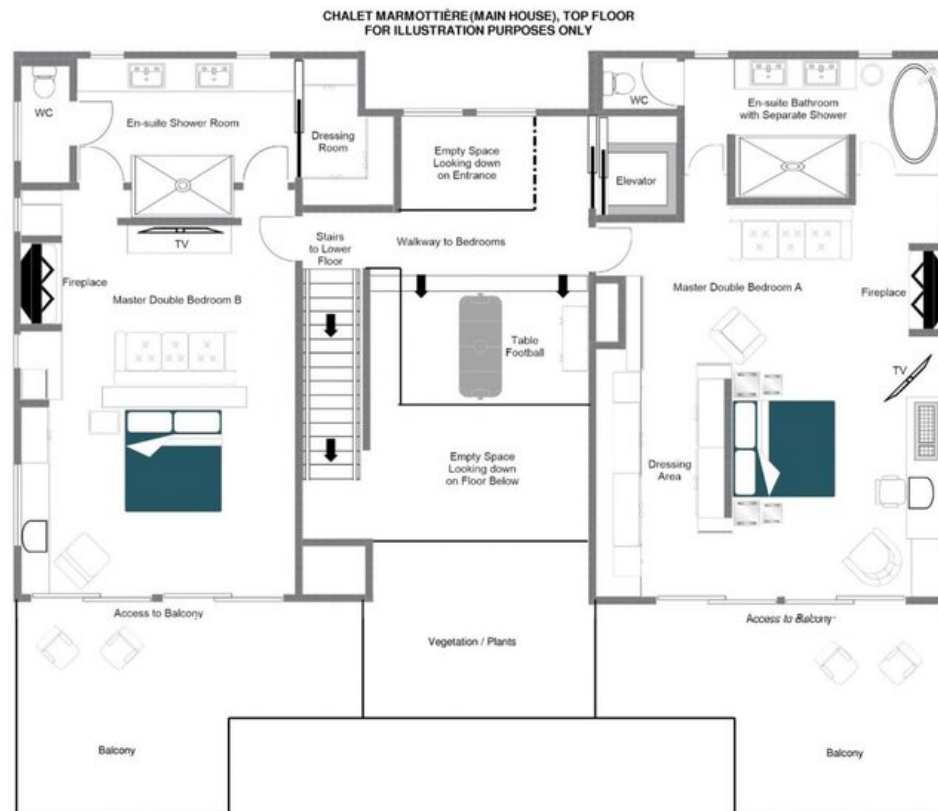






## FLOORPLANS

## TOP FLOOR (MARMOTTIÈRE - MAIN)



- ♦ 1 Master bedroom suite (sleeps two, en-suite bathroom with separate shower, dressing room and private balcony)
- ♦ 1 Master bedroom suite (sleeps two, en-suite shower room, dressing room and private balcony) 13

FLOORPLANS

TOP FLOOR (MARMOTTIÈRE SECOND HOUSE)

- ♦ Open plan kitchen, living and dining area
- ♦ Guest WC



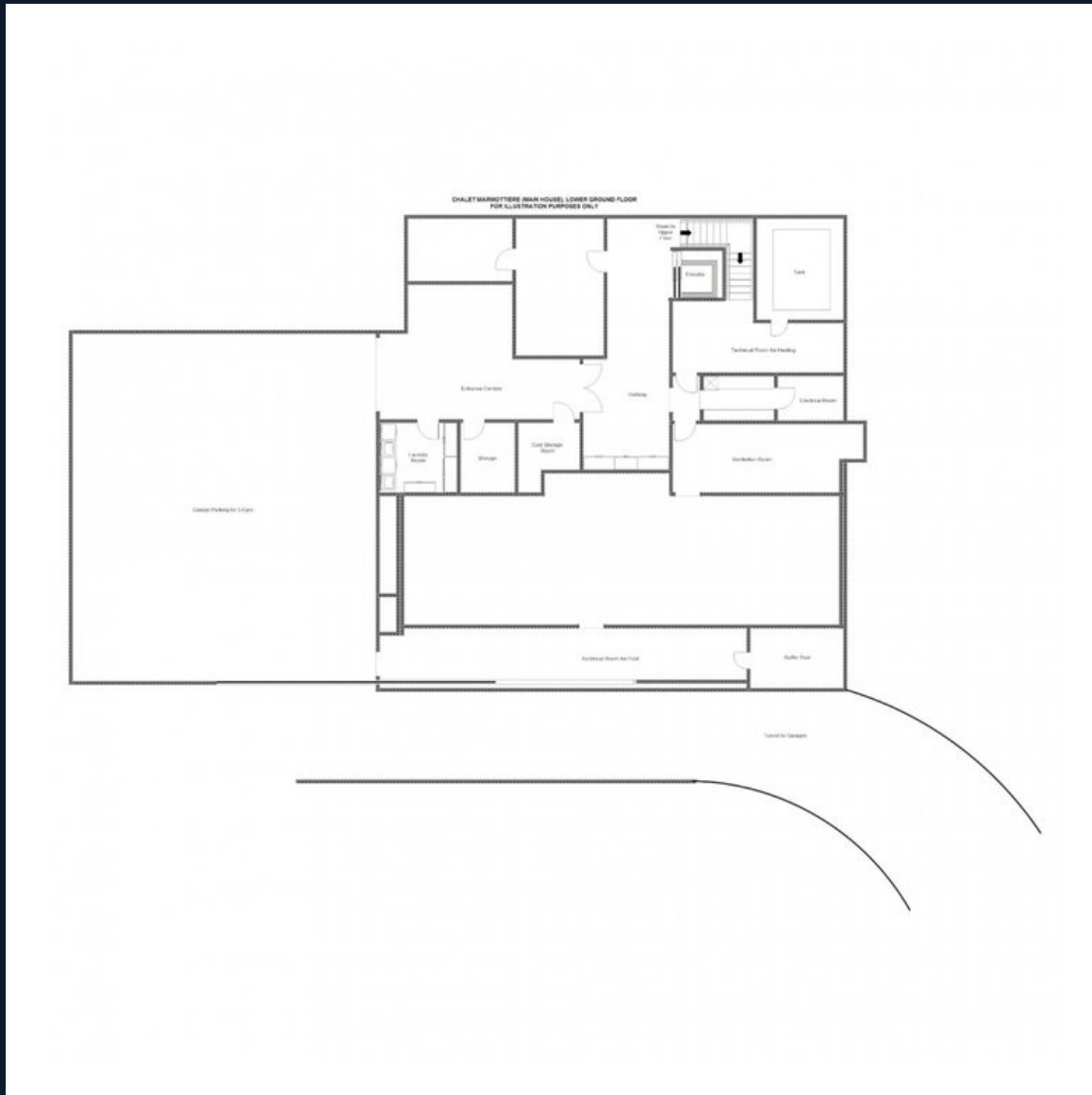
## FLOORPLANS

### FIRST FLOOR (MARMOTTIÈRE MAIN HOUSE)



- ♦ Open plan living and dining area
- ♦ Office
- ♦ Service kitchen
- ♦ 1 Double bedroom (en-suite bathroom with separate shower)
- ♦ 1 Double bedroom (en-suite shower room)
- ♦ 1 Double bedroom (en-suite shower room)
- ♦ 1 Double bedroom (en-suite shower room)
- ♦ Guest WC 15

## FLOORPLANS



### GROUND FLOOR (MARMOTTIÈRE MAIN HOUSE)

- ♦ Indoor Swimming pool
- ♦ Outdoor hot tub
- ♦ Gym
- ♦ Sauna
- ♦ Hammam
- ♦ Spa
- ♦ Bar and billiards area
- ♦ Gaming room
- ♦ Bowling alley
- ♦ Poker room
- ♦ Wine cellar
- ♦ Kitchen
- ♦ 2 Guests WCs

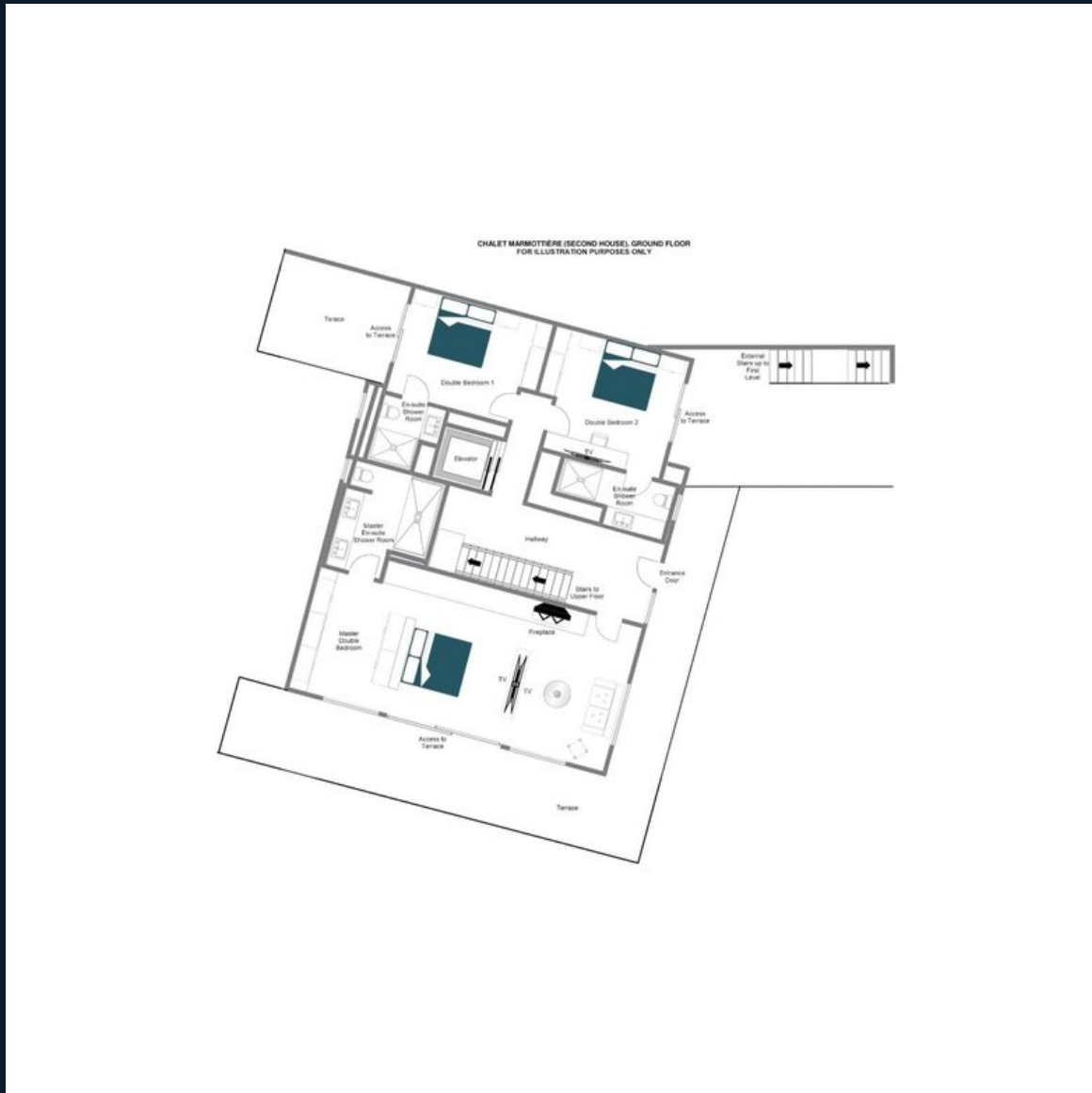
## FLOORPLANS

### LOWER GROUND FLOOR

- ♦ Entrance hallway
- ♦ Garage 17



## FLOORPLANS



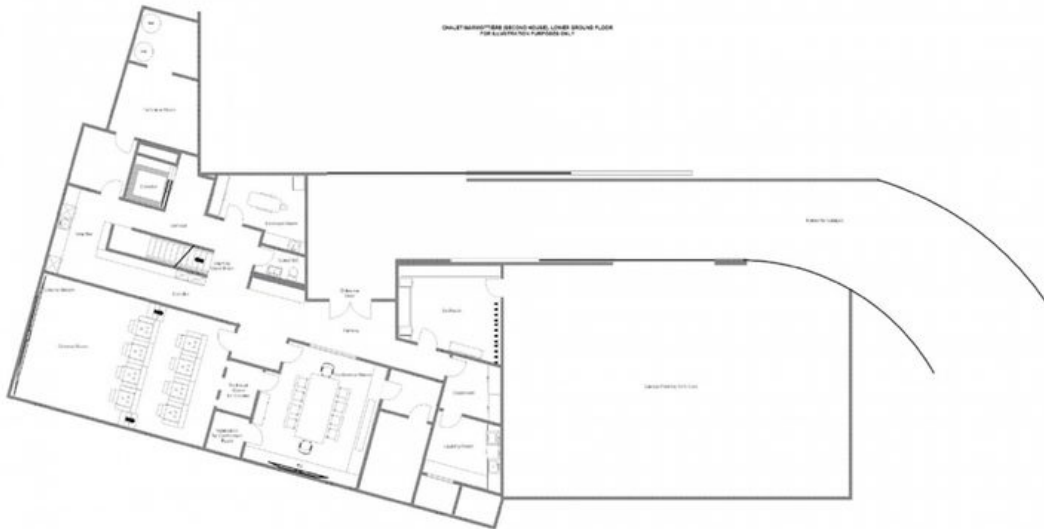
## GROUND FLOOR (MARMOTTIÈRE SECOND HOUSE)

- ♦ 1 Master bedroom suite (sleeps two, en-suite shower room and terrace access)
- ♦ 1 Double bedroom (en-suite shower room)
- ♦ 1 Double bedroom (en-suite shower room)

## FLOORPLANS

### LOWER GROUND FLOOR

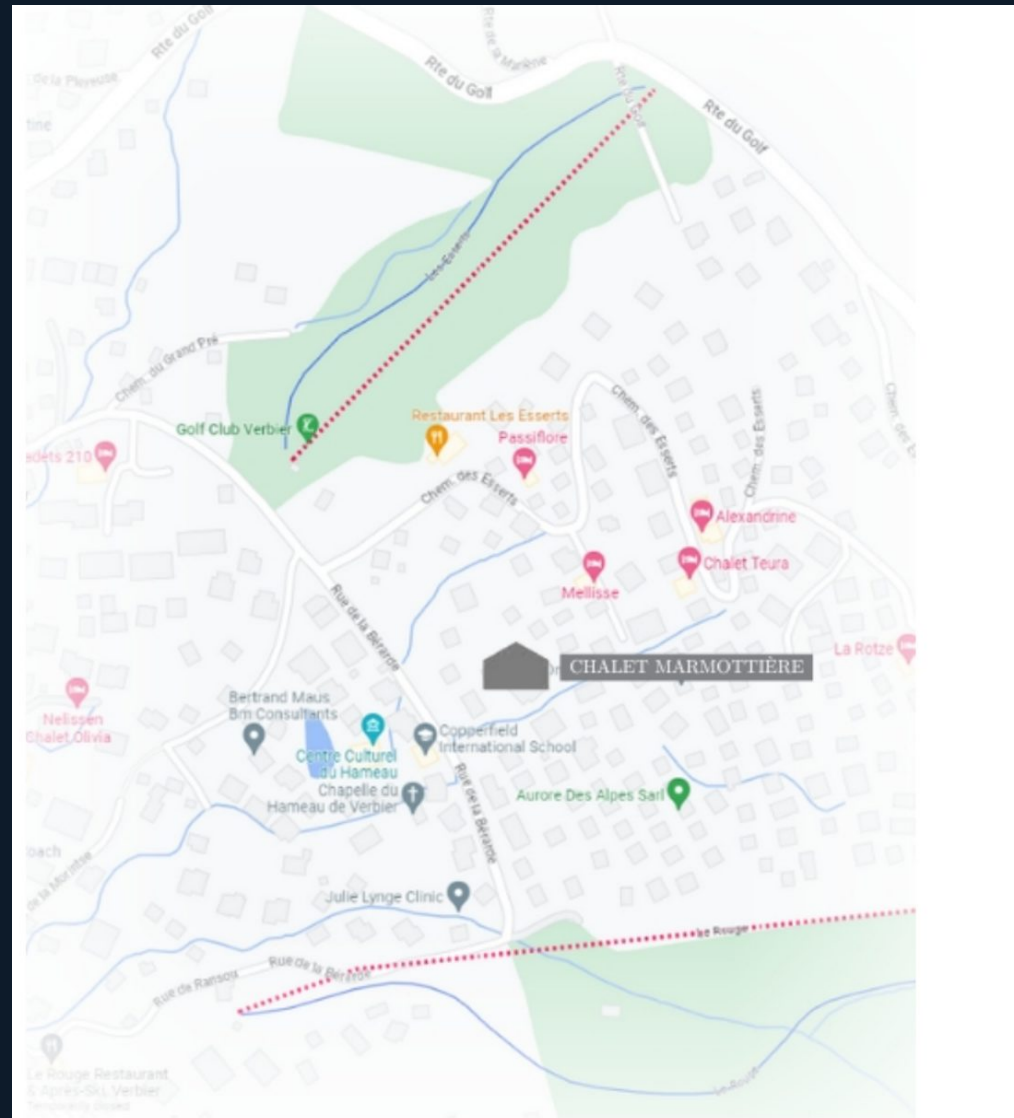
- ♦ Conference room
- ♦ 3D cinema room
- ♦ Massage room
- ♦ Garage
- ♦ Ski room
- ♦ Laundry room
- ♦ Guest WC 19



## LOCATION

### PROXIMITY

- ♦ Place Centrale — 6-minute drive
- ♦ Médran — 4-minute drive.
- ♦ Savoleyres — 2-minute drive.





CHALET MARMOTTIÈRE



VERBIER