



LUXURY CHALET RENTALS

# ALPINE COLLECTION

CHALET ABADE

VAL D'ISÈRE



♦ Val d'Isère, France

♦ 315 m<sup>2</sup>

♦ Sleeps 10 + 2

♦ 5 bedrooms

♦ 5 bathrooms

♦ Balcony

♦ Hammam/steam room

♦ Massage treatment room

♦ Outdoor hot tub

♦ Tv room

♦ Bluetooth speaker

♦ Integrated sound system





## THE RESIDENCE

# Chalet Abade

Awarded World's Best New Ski Chalet in 2022 and newly renovated by internationally renowned interior designers Turner Pocock, Chalet Abade is a singular alpine retreat occupying a privileged ski-in, ski-out position in Val d'Isère. Spanning three floors and 315 square metres, this stand-alone chalet accommodates up to twelve guests across five exquisitely appointed bedrooms, each conceived with a quiet sophistication that balances warm craftsmanship with considered modern design. The piste leading directly to the Olympique and Solaise lifts runs immediately alongside the chalet, while the heart of the village lies a mere five minutes away and the main lift station hub is just one minute on skis.

The first floor is given entirely to the art of entertaining, anchored by a soaring double-height living room where exposed beams, a grand fireplace and a striking chandelier create an atmosphere of true alpine grandeur. Expansive floor-to-ceiling windows frame uninterrupted views of the adjacent piste and the mountains beyond, flooding the space with natural light. A dining area with its own open fireplace and elegant wishbone chairs flows gracefully into a state-of-the-art kitchen with balcony access, where a table and chairs invite long, sun-filled lunches. Discreet wall-mounted speakers throughout lend every occasion its own perfect atmosphere, while a cosy television room, equipped with Netflix and Apple TV, offers a more intimate retreat for quieter evenings.



On the ground floor, a dedicated ski and boot room with heated boot warmers attends to every practical need, whilst a hammam, rain shower and private massage room provide genuine restoration after a day on the slopes. Three of the five bedrooms are found on this level, including a spacious quad bunk room and two twin and double rooms, each with sensor-activated lighting and beautifully finished en-suite shower rooms. The two master suites crown the upper floor, one graced with a private balcony commanding sweeping mountain views, both conceived as deeply tranquil sanctuaries with generous built-in storage, separate showers and the softest of sensor-led lighting. Outside, the hot tub awaits those wishing to linger over the majestic mountainscape as dusk settles over the peaks.













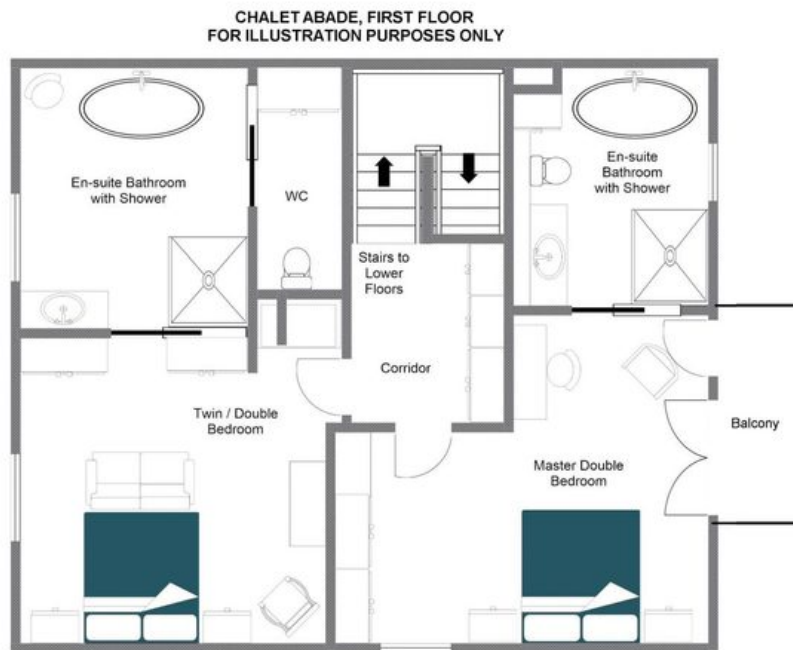






# FLOORPLANS

## TOP FLOOR



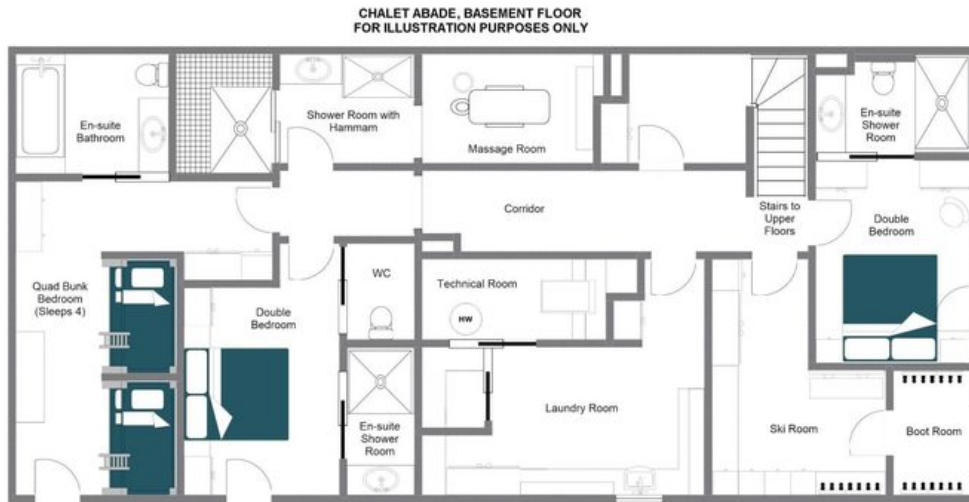
# FLOORPLANS

## FIRST FLOOR



# FLOORPLANS

## GROUND FLOOR





CHALET ABADE

— ◆ —  
VAL D'ISÈRE