



LUXURY CHALET RENTALS

ALPINE COLLECTION

CHALET MARIA SCHNEE

ST ANTON



- ♦ St Anton, Austria
- ♦ 550 m²
- ♦ Sleeps 15

- ♦ 7 bedrooms
- ♦ 7 bathrooms
- ♦ Gym

- ♦ Sauna
- ♦ South facing balcony
- ♦ South facing terrace

- ♦ Library
- ♦ Tv/playroom
- ♦ Tv





THE RESIDENCE

Chalet Maria Schnee

Chalet Maria Schnee is a singular stand-alone residence in the peaceful, exclusive Nasserein quarter of St Anton, offering more than 550 square metres of refined alpine living across three floors and welcoming up to fifteen guests across seven beautifully appointed bedrooms. Originally built in 1978 by World Cup alpine skiing champion Gertrud Gabl and her family, the chalet was thoughtfully restored by its current owners to honour its storied heritage while introducing a timeless, sophisticated interior. Floors, doors and the library have been lovingly crafted from 300-year-old oak planks, coffered ceilings grace the master suite, and an original Tyrolean zirbenstube, complete with antique carvings and a functioning traditional stove, has been preserved as one of the guest rooms. Every bathroom is finished to immaculate standards in limestone, oak, slate and grey tadelakt, and a grand drawing room with sunken sitting area, floor-to-ceiling French windows and a large roaring fireplace creates an atmosphere of unhurried, convivial warmth.

The principal living floor unfolds into an open-plan dining and sitting area where the main table seats twelve, a separate library invites quiet contemplation on sink-in sofas, and a charming staircase enclave conceals built-in wooden benches, fur throws and a secret cupboard of Schnapps glasses. Impressive oak sliding doors reveal an extensive kitchen combining quality wooden cabinetry, contemporary art and modern appliances, complemented by an additional breakfast table for informal family meals. South-west-facing sun-drenched terraces and a large garden afford uninterrupted views across the snowcapped St Anton valley, and the master bedroom terrace provides a spectacular setting for a morning coffee above the rooftops.



The lower ground floor is equally considered in its provision for leisure and practicality, housing a 40-square-metre playroom that converts into a cinema room, a gym, a four-person sauna with separate shower area and WC, a professional kitchen, a laundry room and a spacious ski room with heated boot warmers. The chalet sits only a few minutes' walk from the lift station, with skiing to and within a short stroll of the property when snow conditions permit, and the vibrant centre of St Anton is a ten-minute walk away. Garage parking for one car and two further external spaces complete this exceptional mountain retreat.















FLOORPLANS

TOP FLOOR



FLOORPLANS

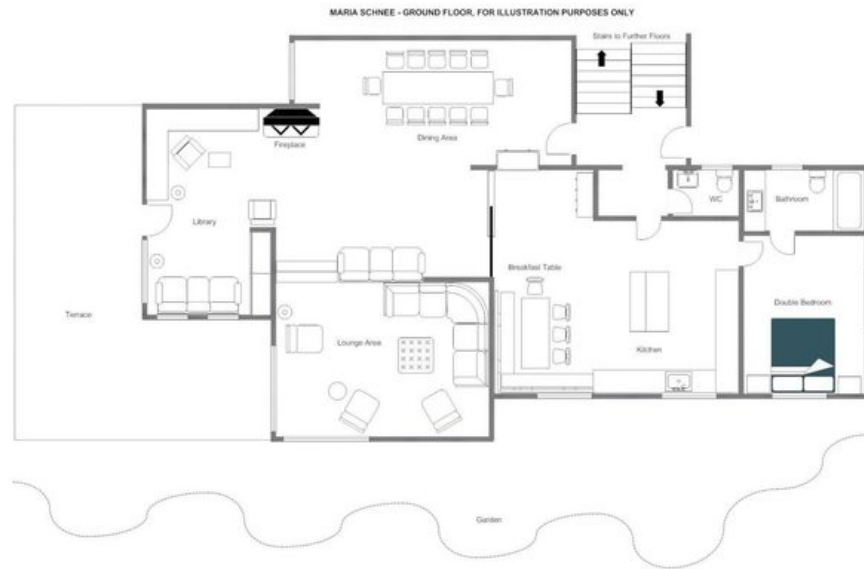
UPPER GROUND FLOOR

MARIA SCHNEE - UPPER GROUND FLOOR, FOR ILLUSTRATION PURPOSES ONLY



FLOORPLANS

GROUND FLOOR



FLOORPLANS

LOWER GROUND FLOOR





CHALET MARIA SCHNEE



ST ANTON