



LUXURY CHALET RENTALS

ALPINE COLLECTION

CHALET FACE À FACE

VAL D'ISÈRE

CHALET FACE À FACE ♦ VAL D'ISÈRE



♦ Val d'Isère, France

♦ 380 m²

♦ Sleeps 12 + 2

♦ 6 bedrooms

♦ 6 bathrooms

♦ Balcony

♦ Hammam/steam room

♦ Indoor pool

♦ Massage treatment room

♦ Outdoor hot tub

♦ Sauna

♦ Spa





THE RESIDENCE

Chalet Face à Face

Crowned winner of the World's Best New Ski Chalet in 2021, Chalet Face à Face is a six-bedroom masterpiece set directly beside the slopes of Val d'Isère, accommodating up to fourteen guests in surroundings of exceptional craftsmanship. Thoughtfully renovated with reverent attention to local architectural tradition, the property weaves aged timber, exposed beams and authentic alpine furnishings into a cohesive, fairy-tale whole spanning 380 square metres. Its elevated position rewards guests with sweeping views across the snow-draped peaks and village below, accessible on foot within fifteen minutes or by a five-minute chauffeured drive.

The chalet unfolds across four principal levels, each thoughtfully considered for both comfort and occasion. Guests arrive into a generous entrance hall and ski room, complete with boot warmers, before discovering the lower ground floor's tranquil spa sanctuary, where a small indoor swimming pool, sauna, steam shower and dedicated massage and yoga area offer restorative respite after a day on the mountain. A dedicated cinema room with a large flat-screen smart television and full surround sound completes this lower level. The principal sleeping floor hosts four bedrooms, including a master suite with en-suite bathroom, floor-to-ceiling windows framing La Face and direct access to a terrace-set hot tub, while a further twin and double room share the same terrace outlook. A charming quad bunk room serves younger guests with equal care.

CHALET FACE À FACE ♦ VAL D'ISÈRE



At the summit of the chalet, the open-plan kitchen, living and dining space is nothing less than spectacular, crowned by a cathedral ceiling that soars to five metres, framed by double-height windows and anchored by a striking contemporary hanging fireplace. The dining table seats ten beneath statement pendant lighting, while a balcony extends the living area outward to command breathtaking panoramic views of the surrounding mountains. Above, a mezzanine snug provides a convivial retreat for after-dinner evenings, completing a residence in which every detail has been elevated to meet the very highest standards of alpine living.



CHALET FACE À FACE ♦ VAL D'ISÈRE



CHALET FACE À FACE ♦ VAL D'ISÈRE









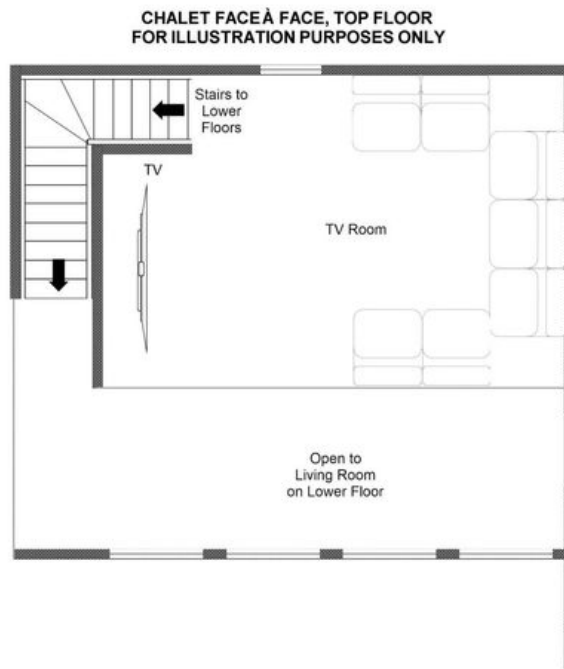






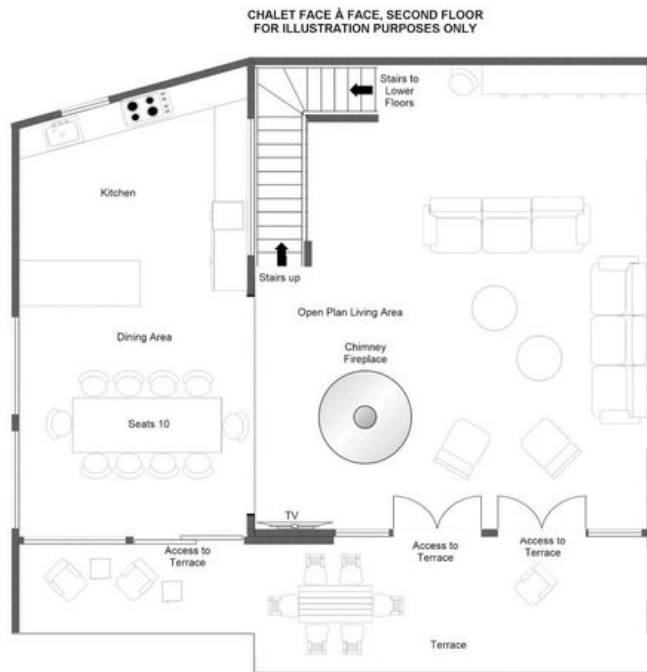


FLOORPLANS



FLOORPLANS

TOP FLOOR



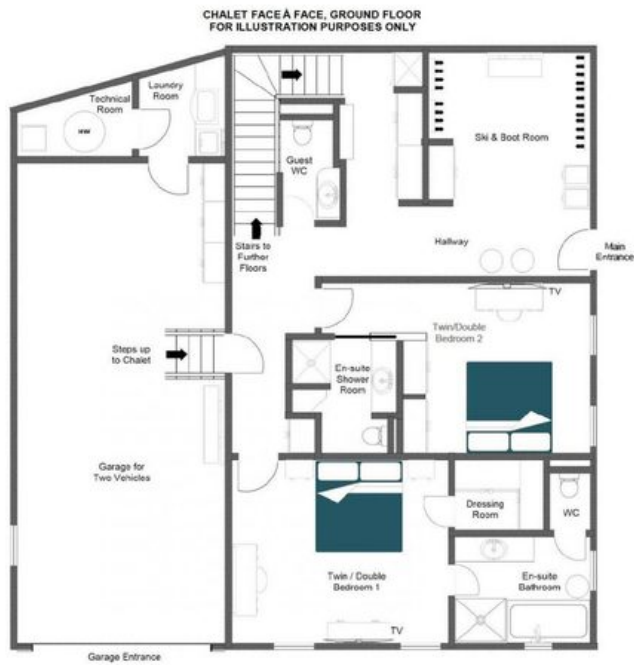
FLOORPLANS

FIRST FLOOR



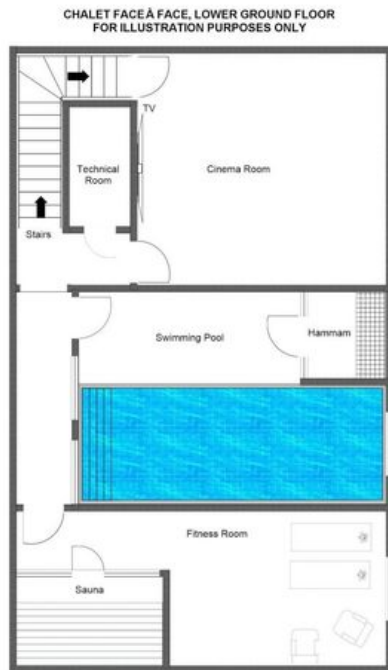
FLOORPLANS

GROUND FLOOR



FLOORPLANS

LOWER GROUND FLOOR





CHALET FACE À FACE

— ◆ —
VAL D'ISÈRE