



LUXURY CHALET RENTALS

# ALPINE COLLECTION

CHALET ROSELLE

— ◆ —  
V E R B I E R



♦ Verbier, Switzerland

♦ 178 m<sup>2</sup>

♦ Sleeps 8

♦ 4 bedrooms

♦ 5 bathrooms

♦ South facing balcony

♦ Terrace

♦ Tv/playroom

♦ Sonos

♦ Wifi

♦ Cot/high chair available

♦ Family-friendly chalets





## THE RESIDENCE

## Chalet Roselle

Chalet Roselle is a contemporary yet deeply inviting retreat in Verbier, thoughtfully designed for families and intimate groups of eight who seek both comfort and Alpine grandeur. Spanning 178 square metres across four bedrooms, the chalet frames sweeping panoramic views over the town and valley through floor-to-ceiling windows that flood the open-plan living space with natural light. A commanding wood-burning fireplace anchors the sitting room, where a Sonos sound system sets the mood for evenings in, while the adjacent open-plan kitchen with modern appliances and breakfast bar encourages effortless sociability. A separate television room provides a quiet retreat, and a furnished south-facing balcony beckons on crisp, sunny mornings with coffee in hand.

The principal bedroom, positioned on the uppermost level beneath a vaulted ceiling, is a genuine sanctuary. Floor-to-ceiling windows mirror the silhouettes of the surrounding peaks, a generous wardrobe, a three-seater sofa and a dedicated desk area complete this refined space, and a wide skylight above the bath in the en-suite brings the sky indoors amid slate and ceramic finishes with warm, considered lighting. The second double bedroom, finished in warm timber, offers its own en-suite complete with a bathtub. On the lower floor, a further double bedroom with en-suite shower room and a bunk bedroom ideal for younger guests share access to a terrace and a private hedged garden, both dressed with blackout curtains for restful mornings after long days on the mountain.



For the skier, a generously sized boot room with heated boot storage occupies its own entrance on the lower level, with the Médran lift a mere four-minute drive away. The vibrant village centre, with its high-end boutiques and celebrated alpine restaurants, is a leisurely twelve-minute stroll, ensuring that the very best of Verbier is always close at hand. A utility room with washing machine and dryer, ample storage throughout and one outdoor parking space complete a chalet that has been conceived, above all else, for life lived well together in the mountains.







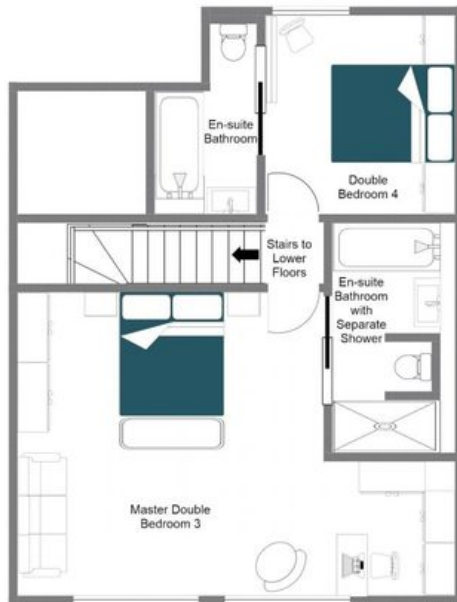




# FLOORPLANS

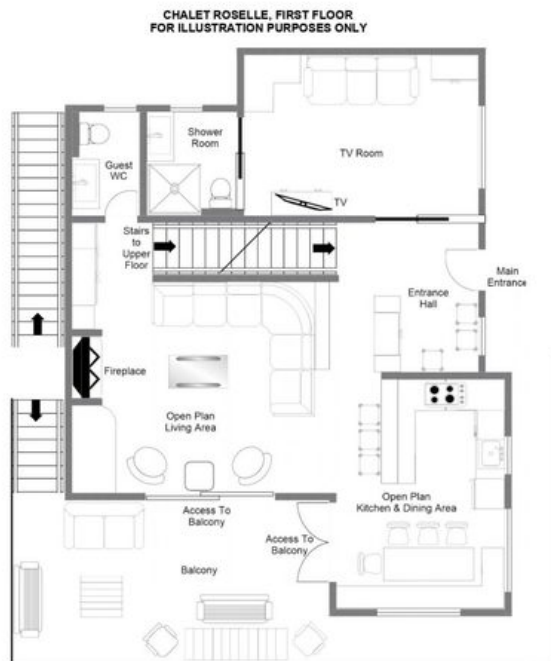
## TOP FLOOR

CHALET ROSELLE, TOP FLOOR  
FOR ILLUSTRATION PURPOSES ONLY



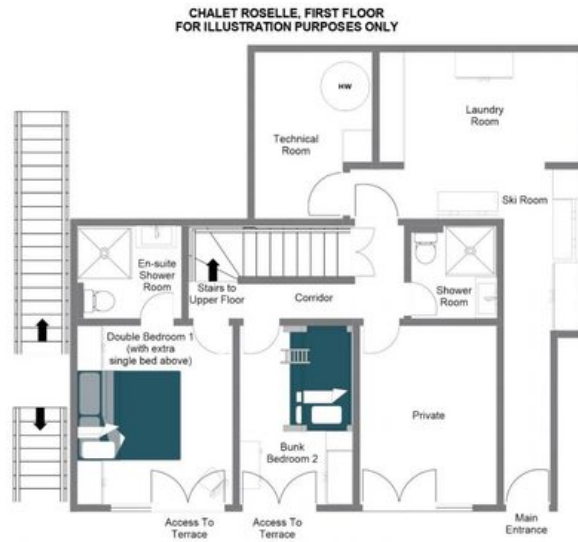
# FLOORPLANS

## FIRST FLOOR



FLOORPLANS

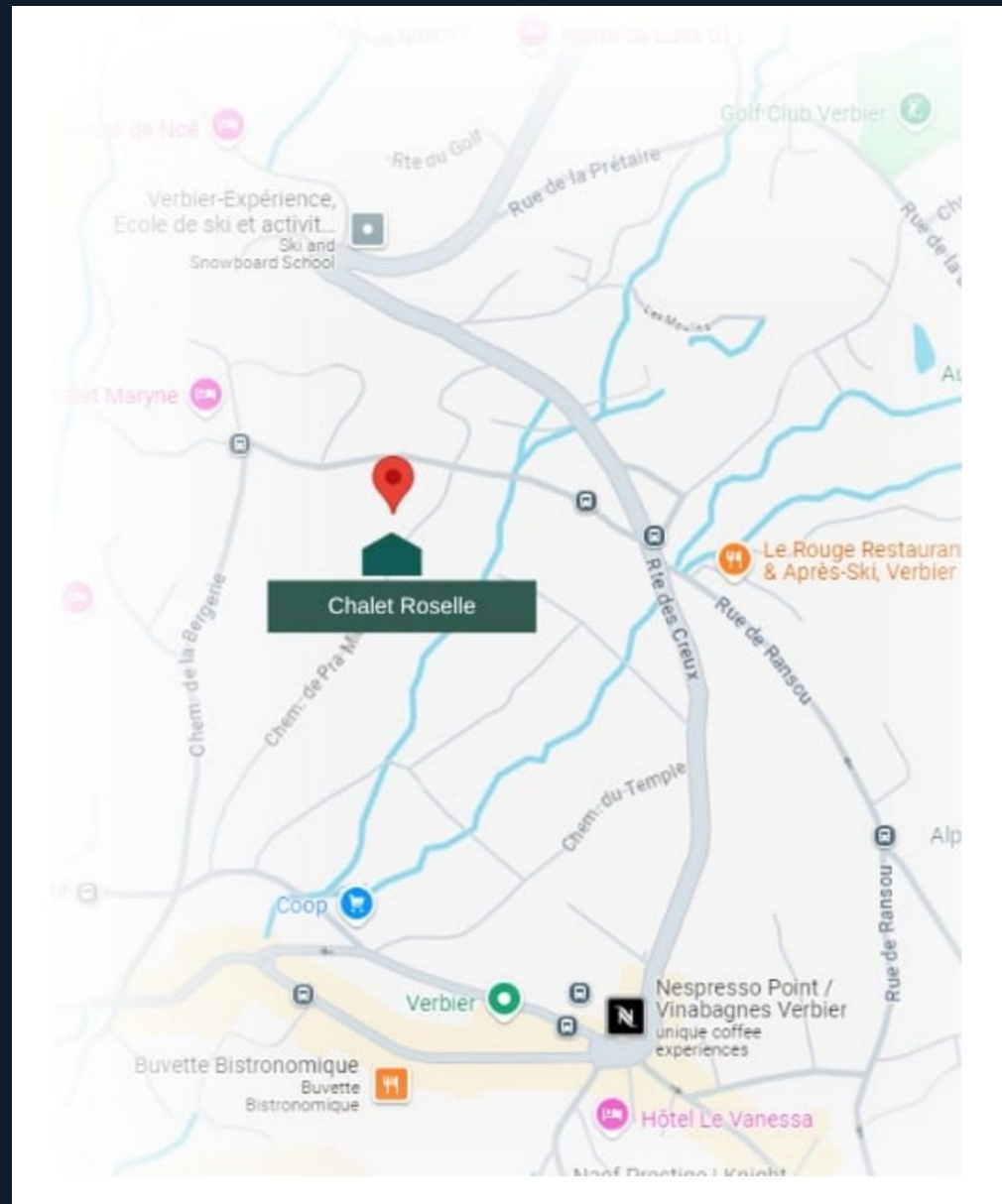
GROUND FLOOR



## LOCATION

## PROXIMITY

- ♦ Place Centrale — 12 minute walk
- ♦ Les Moulins — 1 minute walk
- ♦ Médran — 4 minute drive
- ♦ Savoleyres — 10 minute walk





CHALET ROSELLE



VERBIER