



LUXURY CHALET RENTALS

ALPINE COLLECTION

KIKOMBE LODGE

— ♦ —
S T A N T O N



♦ St Anton, Austria

♦ 238 m²

♦ Sleeps 10

♦ 5 bedrooms

♦ 5 bathrooms

♦ Massage treatment room

♦ Sauna

♦ Terrace

♦ Integrated sound system

♦ Smart tv

♦ Wifi

♦ Family-friendly chalets





THE RESIDENCE

Kikombe Lodge

Kikombe Lodge is a remarkably spacious loft-style apartment set across three floors in the heart of St Anton, offering ten guests the rare sensation of a full alpine chalet within 238 square metres of beautifully considered living space. Positioned a three-minute drive from the main ski lifts and a fifteen-minute walk from the town centre, with a bus stop just 200 metres from the door, the property is as conveniently placed as it is captivating. Rustic timber and traditional alpine detailing are woven throughout with a contemporary colour palette and modern furnishings, striking an effortless balance between cosiness and refinement. A covered shared terrace at the entrance, complete with an open fireplace and outdoor sofas, sets a warmly welcoming tone from the very first arrival.

The centrepiece of the apartment is its airy open-plan living floor, where a wood-burning fireplace anchors a generous dual-aspect sitting room divided between a television snug with deep, comfortable seating and a convivial fireside lounge ideal for unhurried evenings. The dining area, which seats ten around a solid wood table, enjoys views across to the Rendl ski area and flows naturally into a sleek open-plan kitchen appointed with matte black cabinetry and Miele appliances. Bohemian throws, textured rugs and generous windows flooding the space with natural light lend the entire floor an inviting, lived-in warmth. A Swedish-style sauna and an adjoining dedicated massage room on this level allow guests to restore completely after long days exploring the vast Arlberg ski area, with in-residence treatments available to arrange through the concierge.



Five bedrooms, all configurable as emperor doubles or twins to suit the precise composition of each party, are distributed across the remaining floors. The master bedroom features a walk-in wardrobe, a television and an en-suite bathroom with separate shower, while the remaining bedrooms combine generous storage, beautiful wooden finishes and softly toned textiles, the majority benefiting from their own en-suite facilities. A private boot room with heated boot warmers completes the picture, ensuring every practical detail of a skiing stay is attended to with quiet efficiency.















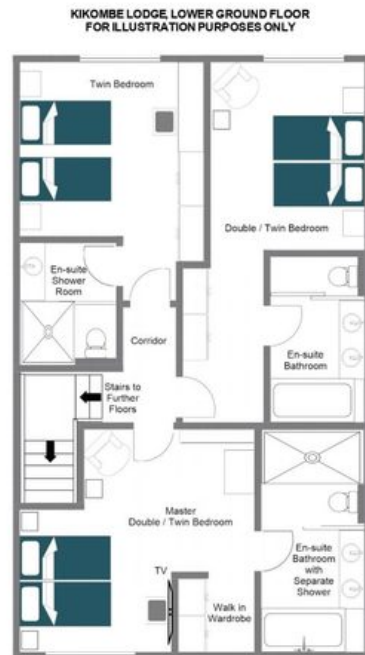
FLOORPLANS

GROUND FLOOR



FLOORPLANS

LOWER GROUND FLOOR



FLOORPLANS

FIRST FLOOR





KIKOMBE LODGE



ST ANTON