



LUXURY CHALET RENTALS

ALPINE COLLECTION

CHALET YETI

— ◆ —
VAL D'ISÈRE



♦ Val d'Isère, France

♦ 335 m²

♦ Sleeps 10

♦ 5 bedrooms

♦ 5 bathrooms

♦ Balcony

♦ Indoor pool

♦ Spa

♦ Bar

♦ Dedicated cinema room

♦ Tv snug

♦ Tv





THE RESIDENCE

Chalet Yeti

Nestled into the mountainside above Val d'Isère in the intimate hamlet of Les Carats, Chalet Yeti commands sweeping views across snow-dusted peaks while remaining discreetly enveloped by tall pine trees. Set directly beneath the iconic Face de Belvedere, this 335-square-metre retreat accommodates ten guests across five individually designed bedrooms, each thoughtfully appointed to balance classic Alpine character with contemporary elegance. The l'Olympic lift lies a mere two-minute ski from the end of the road, while the Belvedere Express is a five-minute walk, placing some of the world's finest skiing in effortless reach.

The heart of the chalet unfolds on the first floor, where double-height ceilings and sweeping bay windows flood the open-plan living space with light and frame extraordinary panoramas. Walls clad in rich, dark timber create an atmosphere of refined warmth, centred upon a beautiful open fireplace that invites unhurried evenings in excellent company. A dedicated bar area, a television snug and a dining table for eight complement the semi-open kitchen, while a generous terrace extends the living space outwards into the pine-scented mountain air. A further sitting room on the second floor, complete with its own fireplace, offers a more intimate retreat, and the top-floor master suite crowns the chalet with three balconies, a spa bath orientated towards the mountain view, a dressing area, a separate shower and a fireplace of its own.



The ground floor reveals the full depth of the chalet's resort credentials: an indoor swimming pool, a hammam and a shower room are housed within a spa finished in carved wood panelling beneath a grand arched window, forming a private sanctuary for restoration after long days on the mountain. Adjoining this sanctuary is a dedicated cinema room fitted with the latest audio-visual equipment and deep, enveloping sofas, perfect for convivial evenings after dinner. A further double bedroom with en-suite bathroom and dressing area, a private laundry room, a ski room and a garage accommodating two cars complete this remarkable ground-floor offering, ensuring that every practical requirement is met with the same quiet generosity that defines the chalet throughout.













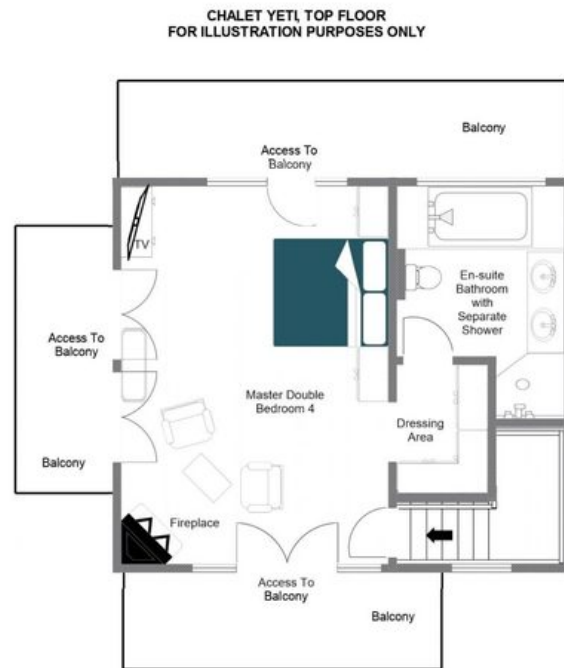






FLOORPLANS

TOP FLOOR



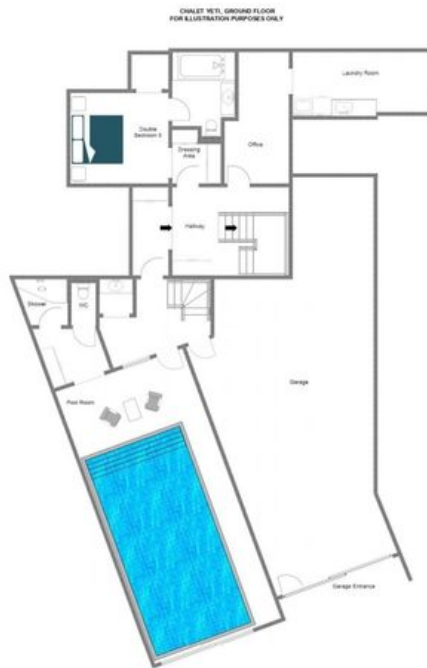
FLOORPLANS

SECOND FLOOR



FLOORPLANS

GROUND FLOOR





CHALET YETI

— ◆ —
VAL D'ISÈRE