



LUXURY CHALET RENTALS

# ALPINE COLLECTION

DOMAINE DE L'ORME

— ◆ —  
MÉRIBEL



♦ Méribel, France

♦ 730 m<sup>2</sup>

♦ Sleeps 12 + 2

♦ 6 bedrooms

♦ 7 bathrooms

♦ Hammam/steam room

♦ Indoor pool

♦ Massage treatment room

♦ Outdoor hot tub

♦ Relaxation space

♦ South facing balconies

♦ Spa





## THE RESIDENCE

# Domaine de l'Orme

Positioned within the exclusive Les Brames neighbourhood on the peaceful outskirts of Méribel, Domaine de l'Orme is a magnificent six-bedroom chalet sleeping twelve guests plus two, offering a secluded Alpine retreat that remains no more than a five-minute drive from both the resort centre and the La Chaudanne ski lifts. The chalet's soaring living room sets an immediate tone of considered luxury, its full-height windows drawing snow-cloaked woodland and distant peaks into the interior, whilst a statement chandelier, stone hearth with wood-burning fireplace and deep plush seating in warm russet tones conspire to create an atmosphere of effortless conviviality. A formal dining room seats fourteen and is served by a built-in bar, the adjacent kitchen provides a spacious, well-appointed environment for a private chef to craft menus of your choosing around a casual table for six, and two bookshelf-lined reading rooms, a foosball table, a mezzanine television snug and a generous ground-floor television room ensure that every inclination, from spirited games evenings to quiet literary afternoons, is perfectly accommodated.

The six bedrooms are finished to an impeccable standard throughout, dressed in muted forest greens and warm earthy tones, each enjoying large windows or private balcony access to absorb the surrounding landscape. The master suite commands the top floor in its entirety, offering a wood-burning fireplace, a plush reading nook, a walk-in dressing room, a private balcony with sweeping panoramic views and an en-suite bathroom appointed with a freestanding roll-top bath, a separate shower and twin sinks. A charming family suite on the spa floor comprises a bunk room sleeping up to four children alongside an adjoining double bedroom, whilst two further double bedrooms and a twin-double room on that same level each benefit from en-suite facilities, dressing areas and terrace access. A sixth double bedroom on the living floor enjoys its own en-suite bathroom and balcony, completing an accommodation offering of exceptional breadth and thoughtfulness.



The lowest guest floor is home to the chalet's private spa, a genuine sanctuary composed of a large indoor swimming pool, a hammam, a dedicated massage room and a tranquil relaxation area with panoramic window, all opening to a terrace where a stunning sunken wooden outdoor hot tub awaits, framed by sparkling snow, ancient trees and the vast mountain horizon. A dedicated cinema room provides the setting for family film evenings on colder nights, whilst a well-equipped ski and boot room with boot warmers and ample ski and outerwear storage ensures every return from the slopes is seamlessly managed. Three outdoor parking spaces complete this remarkable property, a chalet that unites genuine seclusion with complete self-sufficiency in one of the Alps' most coveted resorts.

















## FLOORPLANS

### TOP FLOOR & MEZZANINE



- ♦ Study (mezzanine)
- ♦ TV room (mezzanine)
- ♦ 1 Master double bedroom (top floor, fixed double, fireplace en-suite bathroom, separate shower & WC, balcony access)

## FLOORPLANS

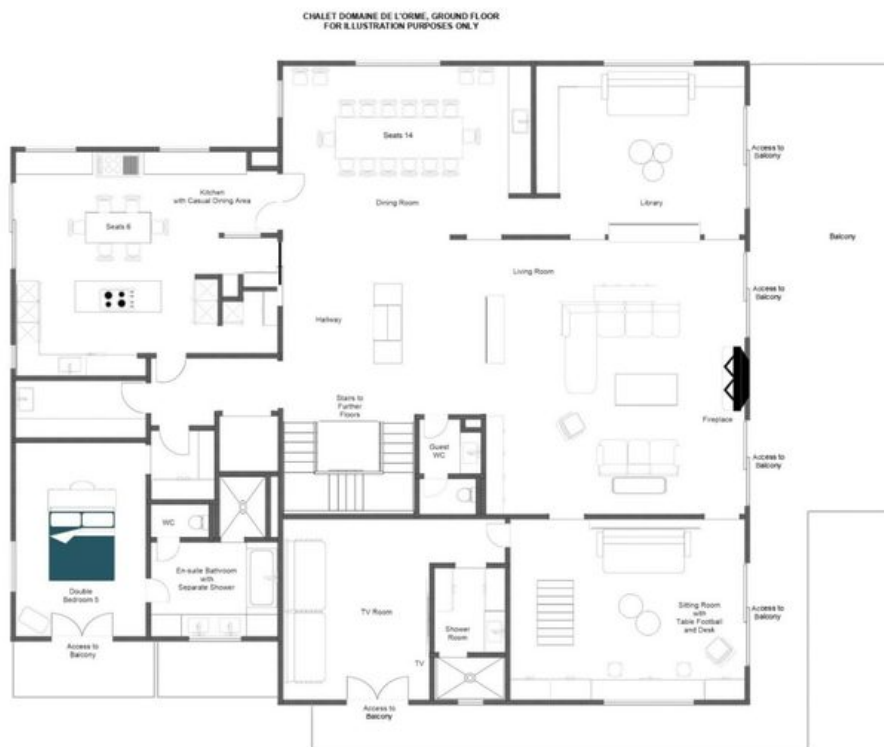
### GROUND FLOOR



- ♦ 1 double bedroom (en suite bathroom, separate shower & WC, balcony access)
- ♦ Sitting room (foosball table, desk, balcony access)
- ♦ Library (balcony access)
- ♦ TV room (en suite shower room, balcony access)
- ♦ Dining room (seats 14)
- ♦ Living room (fireplace, balcony access)
- ♦ Guest WC
- ♦ Kitchen (casual dining table, seat 6) 17

## FLOORPLANS

### LOWER GROUND FLOOR

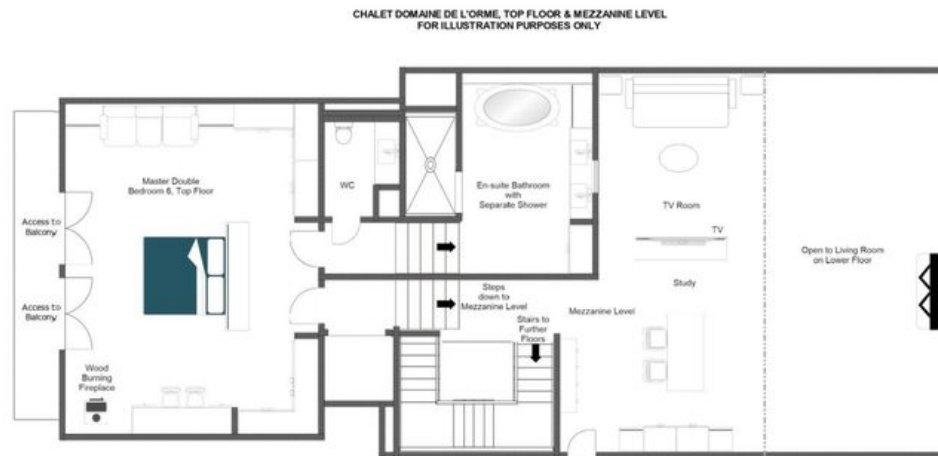


- ♦ Spa (indoor swimming pool, shower, hammam, massage room, WC, terrace access)
- ♦ Outdoor hot tub
- ♦ Ski & boot room
- ♦ Guest WC
- ♦ 1 quad bunk room (shared WC, en suite shower room)
- ♦ 1 double bedroom (shared WC, en suite shower room, terrace access)
- ♦ 1 double bedroom (en suite bathroom, separate shower & WC, terrace access)
- ♦ 1 twin/double bedroom (en suite bathroom, separate shower & WC, terrace access)

## FLOORPLANS

### BASEMENT FLOOR

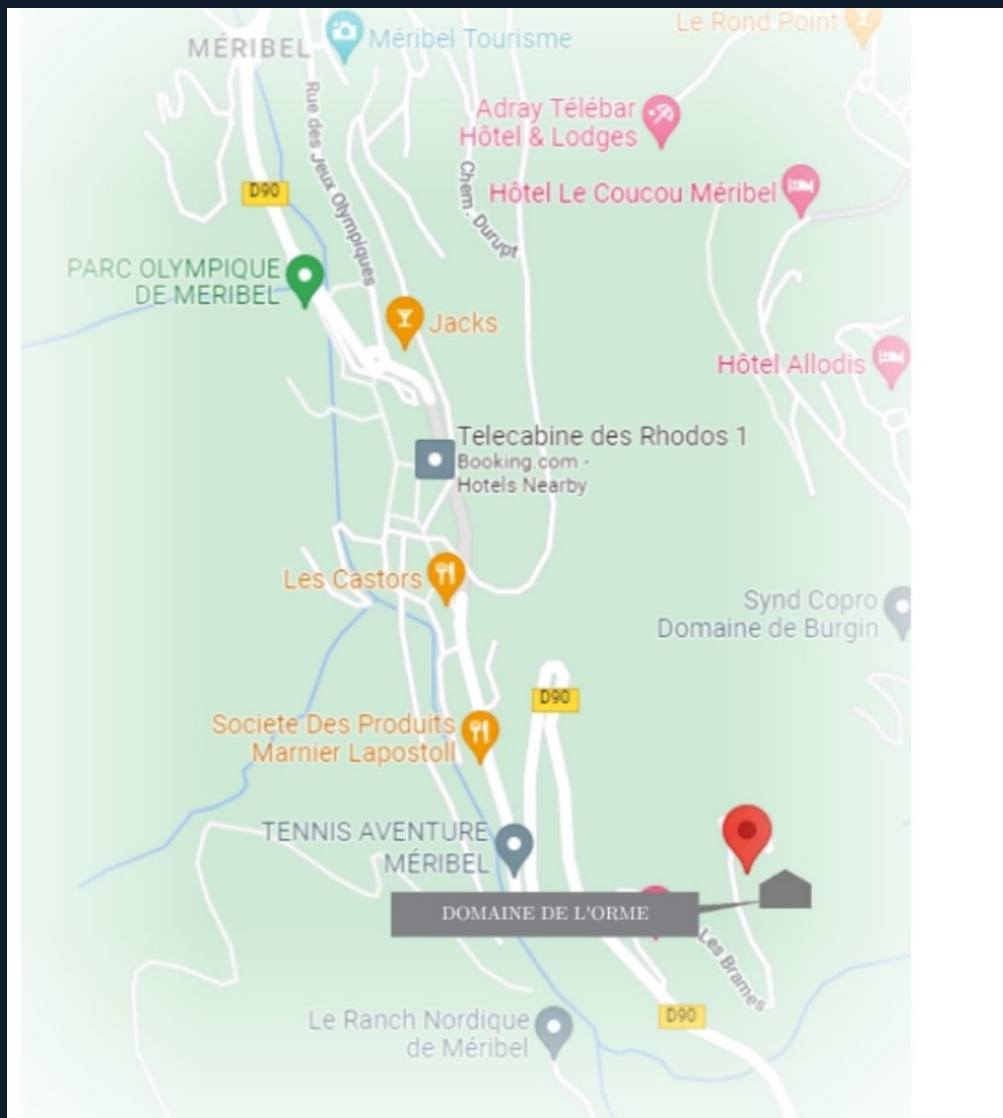
- ♦ Laundry room
- ♦ Storage room
- ♦ Technical area
- ♦ Staff apartment (not for guest use) 19



## LOCATION

### PROXIMITY

- ♦ Méribel centre — 5-minute drive
- ♦ La Chaudanne ski lifts — 5-minute drive





DOMAINE DE L'ORME  
— ◆ —  
MÉRIBEL