



LUXURY CHALET RENTALS

# ALPINE COLLECTION

# SASHA APARTMENT 4

COURCHEVEL



♦ Courchevel, France

♦ Sleeps 10

♦ 5 bedrooms

♦ 5 bathrooms

♦ Gym

♦ Hammam/steam room

♦ Indoor hot tub

♦ Massage treatment room

♦ Plunge pool

♦ Sauna

♦ Shared access to hammam





## THE RESIDENCE

## Sasha Apartment 4

Poised in one of Courchevel 1850's most coveted positions, Sasha Apartment 4 is a first-floor residence of rare refinement, welcoming up to ten guests across five beautifully appointed bedrooms. A private elevator delivers you directly into the apartment, where the living spaces are arranged with considered elegance on either side of a generous central sitting room. Floor-to-ceiling windows frame sweeping views of the pistes, drawing the landscape inward, while the expansive terrace beyond offers ample seating for lingering afternoons in the Alpine sun. Inside, an L-shaped sofa anchors the living area alongside a fireside retreat, and a sleek kitchen dressed in grey wrap-around countertops and warm wood furnishings provides every comfort for self-sufficient stays. The dining table, set for ten, becomes the natural heart of convivial evenings, complemented by two separate television rooms for quieter moments of repose.

The five bedrooms are divided thoughtfully across both wings of the apartment, each distinguished by its own considered colour palette, wood detailing, and plush grey carpeting, with white marble shower rooms lending a clean, sophisticated finish throughout. The master bedroom is particularly impressive, offering ample storage, twin sinks, a desk area, a television, and generous floor-to-ceiling windows that flood the room with natural light. A double bedroom with en-suite shower room enjoys the same luminous aspect, its windows spanning two sides, whilst two well-proportioned twin rooms share a stylish en-suite shower room. A further double bedroom completes the accommodation, featuring its own en-suite shower room with twin sinks, a walk-in wardrobe, and a television.

SASHA APARTMENT 4 ♦ COURCHEVEL



Beyond the main apartment, a private spa annexe elevates the experience considerably, housing an indoor hot tub, hammam, sauna, gym, and massage room, together with a guest bathroom with shower. Guests additionally benefit from access to a shared hammam within the building. A shared ski room with individual lockers ensures effortless returns from the slopes, placing Sasha Apartment 4 firmly among the most compelling addresses in Courchevel 1850.





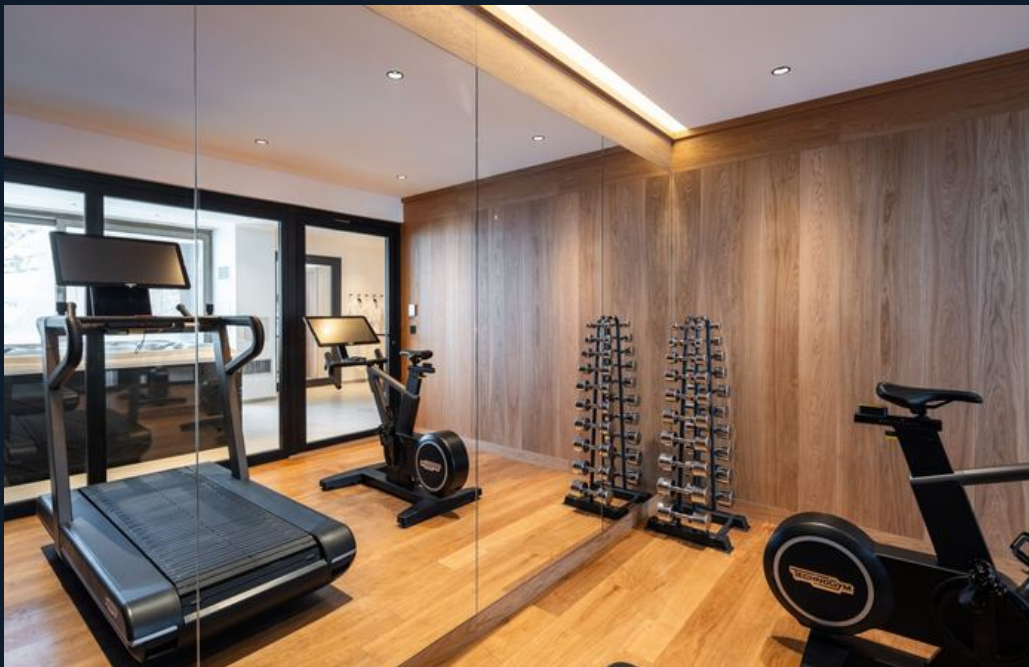
















# FLOORPLANS

## FIRST FLOOR



# FLOORPLANS

## ANNEX

SASHA - APARTMENT 4, SPA ANNEXE  
FOR ILLUSTRATION PURPOSES ONLY





SASHA APARTMENT 4

— ◆ —  
COURCHEVEL