



LUXURY CHALET RENTALS

ALPINE COLLECTION

AROLAY PENTHOUSE

VAL D'ISÈRE



◆ Val d'Isère, France

◆ 155 m²

◆ Sleeps 8

◆ 4 bedrooms

◆ 4 bathrooms

◆ Bluetooth speaker

◆ Smart tv

◆ Wifi

◆ Balconies

◆ Heated boot warmers

◆ New to bramble ski

◆ Private ski room





THE RESIDENCE

Arolay Penthouse

Perched at 1,930 metres in the tranquil hamlet of Le Fornet, Arolay Penthouse stands among the highest duplex penthouses in the French Alps, a 155-square-metre retreat of rare distinction occupying the top two floors of a traditionally styled chalet. Guests arrive by private lift directly into an elegantly appointed entrance hall, where four en-suite bedrooms await, each dressed with pillow-top Hypnos mattresses and Hungarian goose down bedding. The master suite opens onto a private balcony, offers a full-size bathtub alongside a separate shower, and is complemented by a built-in dressing table and a smart television, while two further bedrooms open onto wrap-around balconies commanding sweeping south and west-facing vistas across the surrounding peaks.

The heart of the penthouse is its dramatic double-height, quadruple-aspect living space, where expansive windows invite panoramic views in every direction and a feature fireplace lends warmth to evenings of après-ski conversation. Reclaimed wood, natural stone and sumptuous textiles compose an atmosphere that is at once sophisticated and genuinely welcoming, and the open-plan kitchen and dining area, crowned by an oversized wicker chandelier, is equally suited to intimate suppers and convivial gatherings. Beyond the glazed walls, a generous south-facing roof terrace provides the perfect setting for al fresco dining or quiet contemplation beneath a canopy of alpine stars, with moonlit pistes stretching into the distance.



Every practical consideration has been addressed with equal care: a dedicated ski room with heated boot warmers, private laundry and drying facilities, and three underground parking spaces, a genuine rarity within Val d'Isère, all accessible by elevator from within the penthouse. The Fornet lift station is a five-minute walk away, offering direct entry into Val d'Isère's celebrated ski area, while a complimentary shuttle bus stopping outside the property and running until two in the morning ensures effortless connection to the vibrant resort centre.

















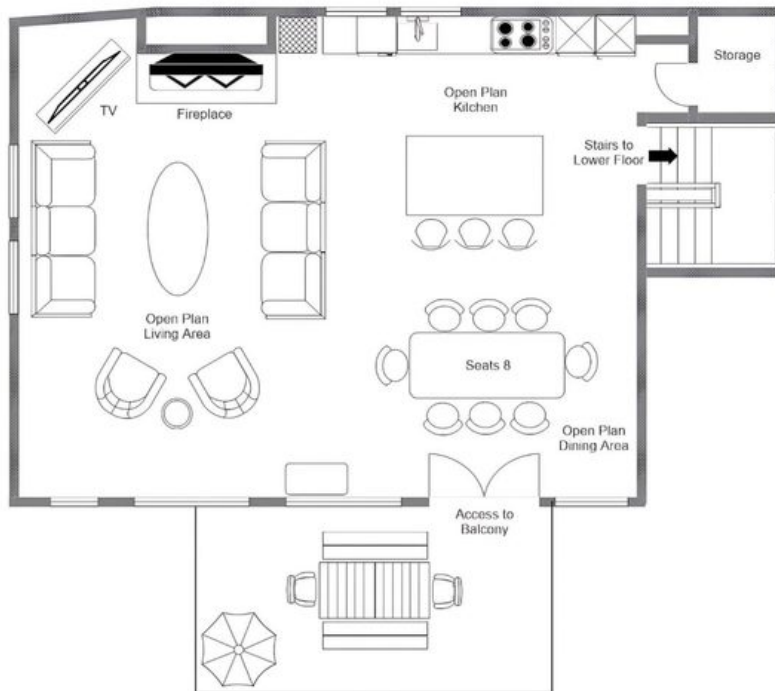




FLOORPLANS

TOP FLOOR

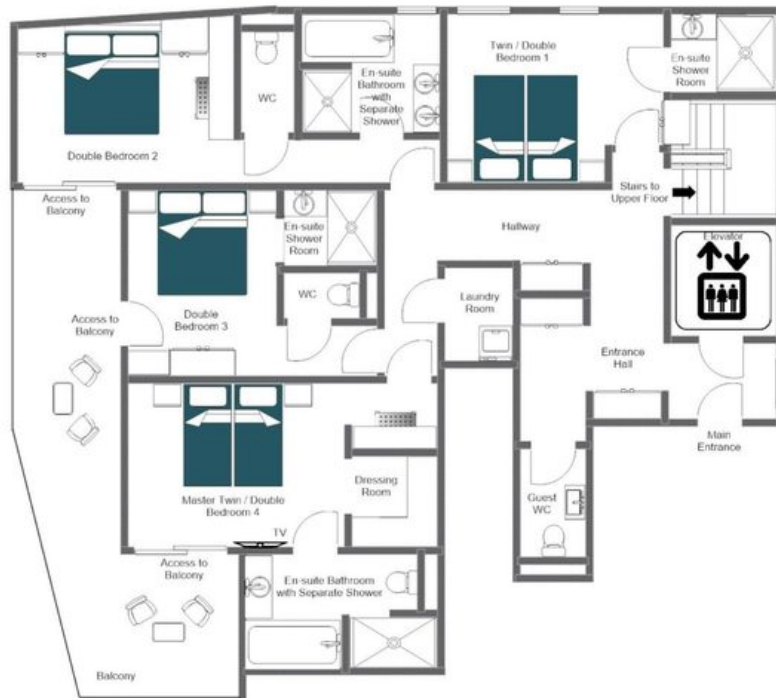
AROLAY PENTHOUSE APARTMENT 4, FLOOR 4
FOR ILLUSTRATION PURPOSES ONLY



FLOORPLANS

FIRST FLOOR

AROLAY PENTHOUSE APARTMENT 4, FLOOR 3
FOR ILLUSTRATION PURPOSES ONLY





AROLAY PENTHOUSE

— ◆ —
VAL D'ISÈRE