



LUXURY CHALET RENTALS

ALPINE COLLECTION

AROLAY APARTMENT 2

— ◆ —
VAL D'ISÈRE



♦ Val d'Isère, France

♦ 184 m²

♦ Sleeps 12

♦ 6 bedrooms

♦ 6 bathrooms

♦ Balcony

♦ Nature view

♦ South facing balconies

♦ Wifi

♦ Family-friendly chalets

♦ Heated boot warmers

♦ New to bramble ski





THE RESIDENCE

Arolay Apartment 2

Nestled within the prestigious hamlet of Le Fornet, this beautifully appointed six-bedroom apartment represents one of Val d'Isère's most compelling new addresses, forming part of a brand-new development just a five-minute walk from the Le Fornet cable car and a short drive from the village centre. Spanning one hundred and eighty-four square metres across two thoughtfully composed floors, the apartment accommodates twelve guests in effortless comfort, with four double bedrooms on the ground floor, each graced with its own en-suite shower room and dedicated desk area, and a dedicated ski room complete with heated boot warmers to ensure seamless transitions between chalet and mountain.

The upper floor reveals the true heart of the residence. The master suite offers a generously proportioned en-suite bathroom with twin sinks and a separate shower, a dedicated desk area, and private balcony access, while a further double bedroom enjoys its own en-suite shower room and captivating mountain vistas. Interiors throughout marry warm wooden floors and walls with chic fur furnishings, bright white tones and considered colourful accents, striking a tone of refined alpine charm that feels both intimate and sophisticated.



The principal living space unfolds in an open-plan arrangement of living, kitchen and dining areas, anchored by a wood-burning fireplace and framed by floor-to-ceiling windows that draw the eye across the mountains and the river below. A south-facing balcony extends the living space outdoors, perfectly orientated for lingering afternoons in the Alpine sun. The kitchen, centred on an island with high seating, granite countertops and oak cabinetry, flows naturally into a dining area comfortably seating ten, making the apartment an equally compelling choice for convivial family gatherings and intimate mountain escapes alike. One indoor parking space within the building's garage completes this exceptional offering.





















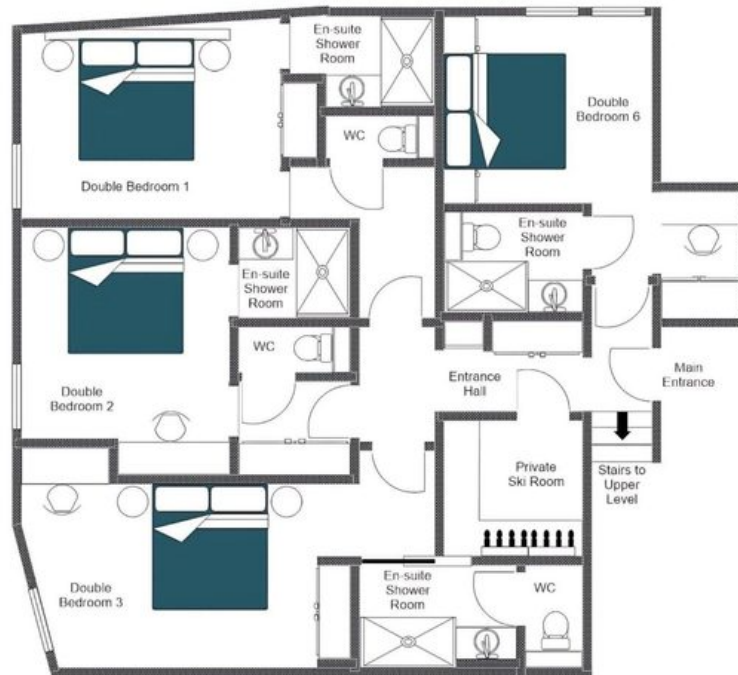
FLOORPLANS



FLOORPLANS

GROUND FLOOR

AROLAY APARTMENT 2, GROUND FLOOR
FOR ILLUSTRATION PURPOSES ONLY





AROLAY APARTMENT 2

— ◆ —
VAL D'ISÈRE