



LUXURY CHALET RENTALS

ALPINE COLLECTION

CHALET PETHEO

— ◆ —
V E R B I E R



◆ Verbier, Switzerland

◆ 271 m²

◆ Sleeps 8 + 4

◆ 5 bedrooms

◆ 4 bathrooms

◆ Hammam/steam room

◆ Outdoor hot tub

◆ Terrace

◆ Tv room

◆ Tv

◆ Wifi

◆ Family-friendly chalets





THE RESIDENCE

Chalet Petheo

Nestled on the Savoleyres side of Verbier, Chalet Petheo is a beautifully appointed five-bedroom mountain retreat extending across 271 square metres, accommodating up to eight guests with four additional berths. Positioned a short drive from both the Savoleyres gondola and Carrefour, the chalet commands breathtaking panoramas across the Verbier ski area and the valley below. Warm wood panelling throughout lends the interiors an authentically alpine character, while floor-to-ceiling French doors flood every principal space with natural light and draw the eye towards the magnificent surrounding peaks.

The heart of the chalet is a generously proportioned open-plan living floor, where a well-considered layout flows between a chef-appointed kitchen, complete with a spacious island, high-specification appliances and a wine fridge, a dining area centred upon a large wooden table seating twelve, and a sitting room where deep, plush sofas gather around a wood-burning fireplace. A wraparound terrace spans the full length of this floor, offering an exceptional setting in which to savour the morning alpine sun or witness the mountains at dusk. A serene study with direct terrace access provides a quiet refuge for moments of contemplative solitude. The primary bedroom crowns the upper level, featuring its own valley views, a rainfall shower and double sinks, while the lower sleeping floor houses four further bedrooms, each with French doors opening to the outdoors, three of which benefit from private en-suite facilities.



Chalet Petheo's leisure amenities are equally considered. A steam room with a separate rainfall shower opens directly to an outdoor hot tub, thoughtfully screened by mature trees to ensure complete privacy, an ideal retreat in which to restore weary muscles beneath an open mountain sky. Two private parking spaces serve the chalet, which is approached via a short flight of steps from the main entrance.



















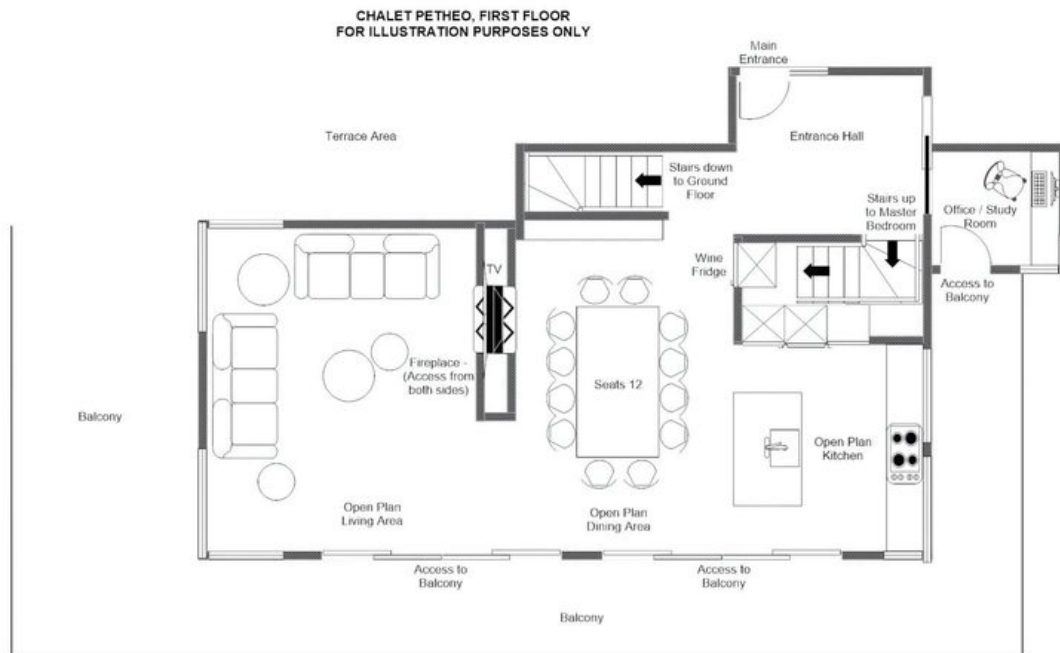
FLOORPLANS

GROUND FLOOR



FLOORPLANS

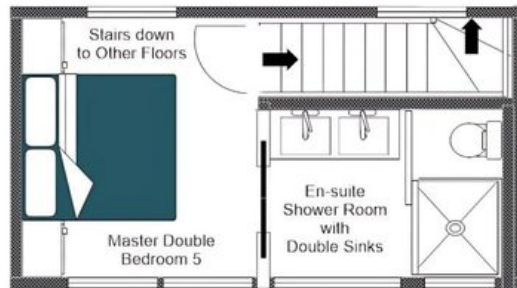
FIRST FLOOR



FLOORPLANS

TOP FLOOR

CHALET PETHEO, TOP FLOOR
FOR ILLUSTRATION PURPOSES ONLY





CHALET PETHEO



VERBIER