



LUXURY CHALET RENTALS

ALPINE COLLECTION

CHALET OLY

VAL D'ISÈRE



♦ Val d'Isère, France

♦ 400 m²

♦ Sleeps 8 + 4

♦ 5 bedrooms

♦ 6 bathrooms

♦ Hammam/steam room

♦ Indoor pool

♦ Relaxation space

♦ Sauna

♦ Spa

♦ Dedicated cinema room

♦ Play room





THE RESIDENCE

Chalet Oly

Settled within the charming hamlet of Le Fornet, Chalet Oly is a magnificent alpine sanctuary spanning four floors and approximately 400 square metres, conceived for up to twelve guests who expect nothing less than the extraordinary. Traditional materials, including beautifully aged timber and soft, neutral tones, are woven seamlessly with sophisticated contemporary finishes, while generous windows draw in the alpine light and frame uninterrupted views across La Face de Bellegarde. A five-minute walk from Le Fornet's cable car and a short drive from the heart of Val d'Isère, the chalet offers both tranquil seclusion and effortless access to one of the world's great ski domains.

At the social core of the chalet, the expansive open-plan living and dining area invites guests to gather around an elegant fireplace after long days on the slopes, while the fully equipped kitchen lends itself with equal grace to intimate family suppers and convivial entertaining. Five beautifully appointed bedrooms, each finished with high-quality materials and calming mountain details, provide a restful and private retreat, complemented throughout by sleek en-suite bathrooms. The master bedroom and its open bathroom occupy the uppermost floor, offering a serene elevation above the surrounding peaks, while a dedicated children's room with four bunk beds ensures younger guests are accommodated with equal care.



The lower levels of Chalet Oly are devoted entirely to indulgence and entertainment. A comprehensive spa area houses a heated swimming pool, sauna, hammam, shower, bathroom and a dedicated relaxation area, creating a private wellness world in which to restore tired muscles at the close of each alpine day. A private cinema room and games area complete the picture, ensuring that every hour spent within these walls, whether après-ski or deep into the evening, is as richly rewarding as those spent on the mountain itself.



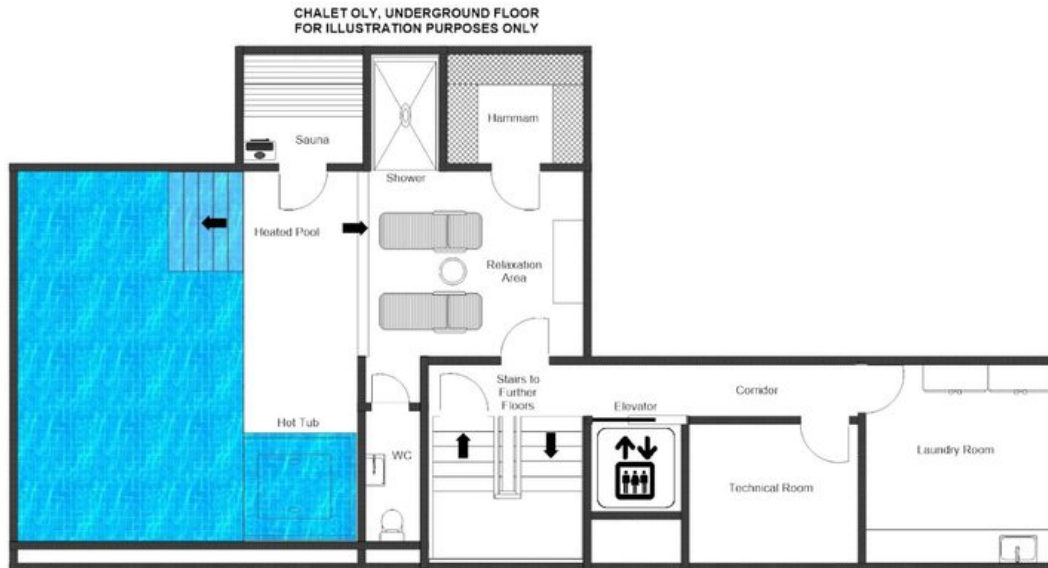






FLOORPLANS

UNDERGROUND FLOOR



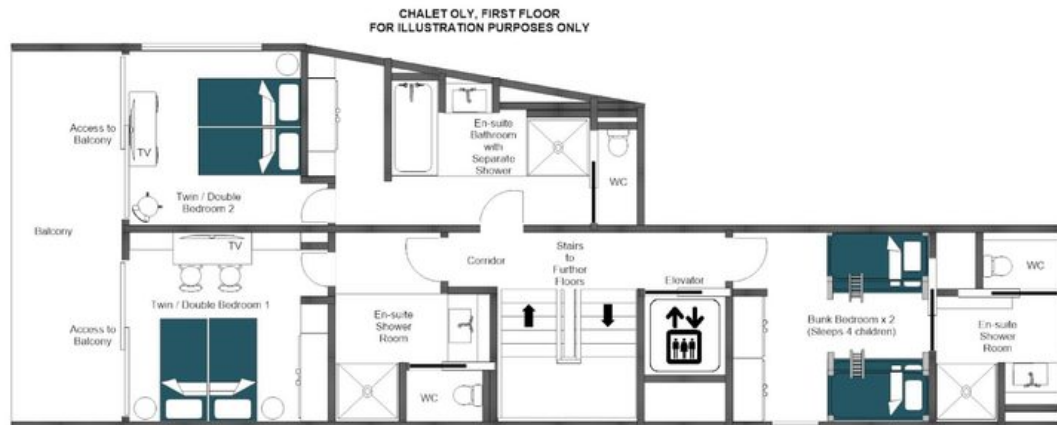
FLOORPLANS

GROUND FLOOR



FLOORPLANS

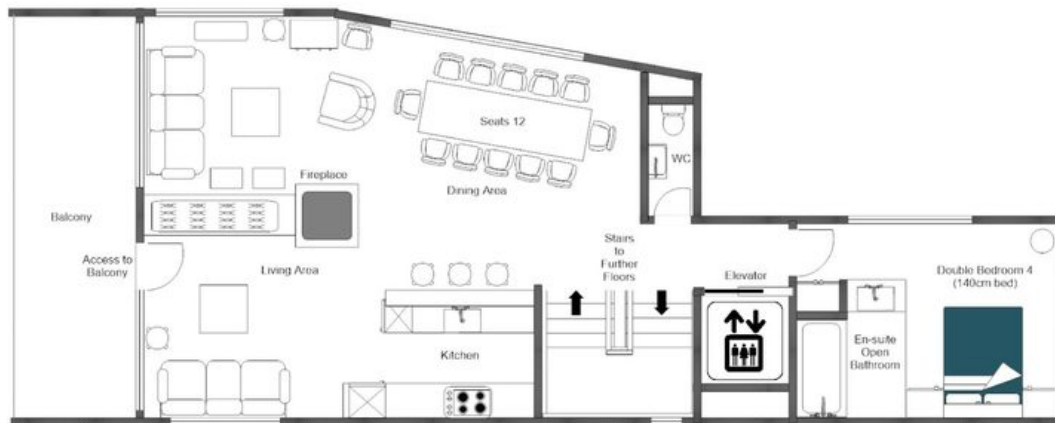
FIRST FLOOR



FLOORPLANS

SECOND FLOOR

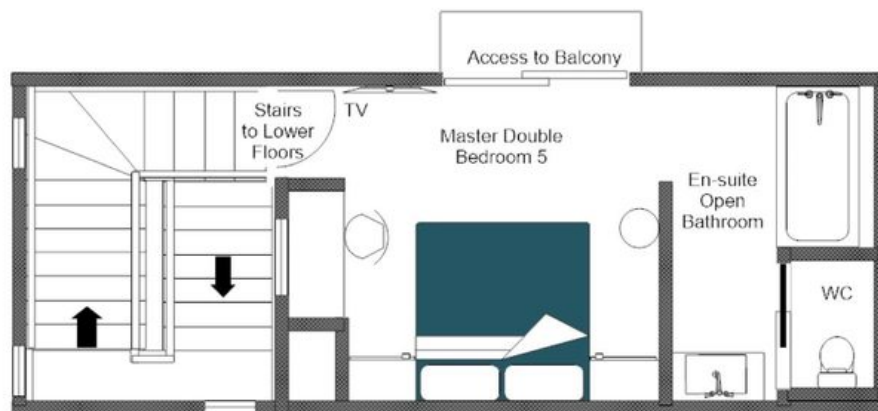
CHALET OLY, SECOND FLOOR
FOR ILLUSTRATION PURPOSES ONLY



FLOORPLANS

THIRD FLOOR

CHALET OLY, THIRD FLOOR
FOR ILLUSTRATION PURPOSES ONLY





CHALET OLY

VAL D'ISÈRE