



LUXURY CHALET RENTALS

ALPINE COLLECTION

SAYEU 116

— ◆ —
V E R B I E R



◆ Verbier, Switzerland

◆ 197 m²

◆ Sleeps 9

◆ 4 bedrooms

◆ 3 bathrooms

◆ Outdoor hot tub

◆ Hi-fi/cd player/mp3 player

◆ Wifi

◆ Cot/high chair available

◆ Family-friendly chalets

◆ Private laundry facilities

◆ Private ski locker





THE RESIDENCE

Sayeu 116

Completed in 2011 and set entirely across a single generous first floor, Sayeu 116 is a 197 square metre apartment in Verbier's sought-after Brunet quarter, accommodation nine guests across four bedrooms. The Brunet location places guests within a five-minute walk of Place Centrale and equally close to the Savoleyres lift, while the Le Rouge piste descends to within a short walk of the front door, with its celebrated bar and restaurant offering a natural and convivial end to each day on the mountain. Two underground parking spaces and a private lift serving the apartment ensure arrivals and departures are handled with quiet ease, and a dedicated ski locker with boot heaters on the ground floor attends to every practical need of the keen skier.

Inside, a spacious entrance hall opens onto a bright, open plan living and dining area anchored by a charming stone fireplace, the dining table seating ten with effortless comfort. The well appointed open plan kitchen and the surrounding balconies frame impressive views across the surrounding peaks, while the outdoor hot tub provides an incomparable setting in which to restore oneself after a day in the mountains. The master bedroom features an open plan en suite bathroom with both a bath and a shower, with direct access to the balcony and the hot tub, complemented by a double bedroom with its own en suite shower room and two further bedrooms, one double and one triple, that share a shower room.



Sayeu 116 is available on a self catered or accommodation only basis, with a dedicated concierge service accompanying every stay. A complimentary bus service nearby connects guests regularly to Savoleyres, Médran and Carrefour, whilst Médran itself lies a ten minute walk or three minute drive away, ensuring the full breadth of the Verbier ski area remains effortlessly within reach throughout the season.



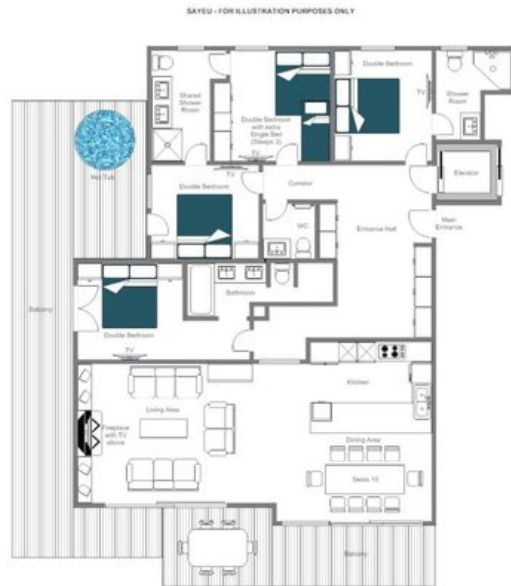






FLOORPLANS

FIRST FLOOR





SAYEU 116

— ◆ —
VERBIER